

St Vincents & Mater Health Sydney
Australian Catholic University

NRI NURSING RESEARCH INSTITUTE

Nurses leading multidisciplinary research

November 2009



Welcome Message

On behalf of our team we are delighted to inform you about our new venture which we believe is unique in the Australian context. The St Vincents and Mater Health (SV&MHS) Australian Catholic University (ACU) Nursing Research Institute is the product of visionary leadership from the two participating entities and marks the start of a vibrant and exciting future for nursing led, clinically focused, patient outcome-oriented multidisciplinary research in healthcare in NSW and beyond.

SV&MHS is a premier healthcare provider comprising six public and private facilities as follows: St Vincent's Hospital; St Vincent's Private Hospital, The Mater Hospital, Sacred Heart Hospice, St Joseph's Hospital and St Joseph's Village.

ACU is a national university with campuses in NSW, Victoria and Queensland. Both organisations are strongly mission and values driven with a focus on serving the people of NSW.

The Nursing Research Institute provides a base for the conduct of nursing research while constructing a bridge between theory and practice and promoting evidence implementation, thus, uniting the worlds of academia and clinical practice. Excitingly, the NRI is also part of the National Centre for Clinical Outcomes Research (Nursing & Midwifery) (NaCCOR), an Australian Catholic University priority research centre.

By bringing together those who 'think' about and investigate the professions' work and those who actually 'do' it, a robust culture of inquiry and innovation in nursing and patient care will flourish. The Institute therefore marks a radical new beginning for the future of healthcare research and aims to make a significant contribution to the health and well-being of the citizenry of Australia.

This booklet informs you about the range and depth of research currently in train at the Nursing Research Institute as well as introduces you to its staff. We hope you find it informative.



Professor Sandy Middleton RN, PhD

Professor of Nursing Research, SV&MHS
Director, SV&MHS ACU NRI
Director, National Centre for Clinical Outcomes
Research (Nursing & Midwifery) (NaCCOR)
Australian Catholic University



Professor Kim Walker RN, PhD

Professor of Nursing (Applied Research)
St Vincent's Private Hospital
Deputy Director, SV&MHS ACU NRI

Governance

The SV&MHS ACU Nursing Research Institute (NRI) is governed by a Steering Committee comprised of the following members. This group meets twice a year to agree on and monitor the strategic directions of the NRI as well as appraise the performance of the directors.

Mr Steven Rubic	Chief Executive Officer St Vincents & Mater Health Sydney
Professor Pauline Nugent	Dean, Faculty of Health Sciences ACU National
Professor Michelle Campbell	Head, School of Nursing, NSW & ACT ACU National
Clinical Associate Professor Leslie Everson	Director of Operations St Vincent's Hospital
Ms Maeve Tumulty	Director of Nursing and Patient Care St Vincent's Hospital
Clinical Associate Professor Jose Aguilera	Director of Nursing & Clinical Services St Vincent's Private Hospital
Clinical Associate Professor Barbara Paris	Director of Nursing & Clinical Services The Mater Hospital
Professor Judy Lumby AO	Director, Joanna Briggs Institute Emeritus Professor University of Technology Sydney Adjunct Professor, University of Adelaide Adjunct Professor University of Sydney Independent Advisor

St Vincents & Mater Health Sydney Australian Catholic University NRI Partnership



Mr Steven Rubic
Chief Executive Officer
St Vincents & Mater Health Sydney

Professor Pauline Nugent
Dean, Faculty of Health Sciences
ACU National



Professor Michelle Campbell
Head, School of Nursing, NSW & ACT
ACU National

**St Vincents & Mater Health Sydney
Australian Catholic University NRI Partnership**



Clinical Associate Professor Leslie Everson
Director of Operations
St Vincent's Hospital

Ms Maeve Tumulty
Director of Nursing and Patient Care
St Vincent's Hospital



Clinical Associate Professor Jose Aguilera
Director of Nursing & Clinical Services
St Vincent's Private Hospital

**St Vincents & Mater Health Sydney
Australian Catholic University NRI Partnership**

Clinical Associate Professor Barbara Paris
Director of Nursing & Clinical Services
The Mater Hospital



Mr John Geoghegan
Executive Director
St Joseph's Hospital

Ms Vicki Dean
General Manager
St Joseph's Village



The SV&MHS ACU NRI

Professor Sandy Middleton RN PhD

Director, SV&MHS ACU NRI

Professor of Nursing Research, SV&MHS

Director, National Centre for Clinical Outcomes Research

(Nursing & Midwifery) (NaCCOR), ACU National

Professor Middleton was appointed as Professor of Nursing Research at St Vincents and Mater Health Sydney in March 2008. Professor Middleton has been working in the area of health services evaluation for the past nineteen years. She is particularly interested in stroke research focusing on nurse led interventions to improve patient outcomes. Her interests also cover implementation research, clinician behaviour change and evidence based practice.

Professor Middleton has an active health leadership profile in Australia and sits on a number of peak bodies including the Greater Metropolitan Clinical Taskforce Governing Committee.



Professor Kim Walker RN PhD

Deputy Director, SV&MHS ACU NRI

Professor of Nursing (Applied Research)

St Vincent's Private Hospital

Professor Walker has thirty five years experience in clinical practice, education and research. He holds the inaugural Chair of Nursing (Applied Research) at St Vincent's Private Hospital Darlinghurst, a conjoint appointment between the Hospital and ACU. Prior to his appointment at ACU he held senior posts at the Universities of Technology Sydney, Western Sydney and Tasmania as well as the College of Nursing

His research interests include models of care, the politics of health, quality and safety, improving patient outcomes and ethical governance; he enjoys a national and international profile on the basis of an extensive publishing career.



Dr Elizabeth McInnes RN PhD
Senior Research Fellow, SV&MHS ACU NRI

Dr Liz McInnes has worked at the SV&MHS ACU NRI since February 2009 as the inaugural Senior Research Fellow. Dr McInnes has fifteen years of experience in primary research, systematic reviews and guideline development. At an international level, Dr McInnes has recently worked at the United Kingdom's prestigious National Institute for Clinical Excellence managing the development of guidelines and systematic reviews for the National Collaborating Centre for Nursing and Supportive Care. Her research areas of interest include systematic review methodology (qualitative and quantitative studies) and clinical outcomes research.



Administration Staff



Mr Rod Hunter-Brittain BMus (QCM) GradDipMus(USyd)
GradCertMgt(Public)(UTS) MBA(CQU) MMus(UNSW) FTCL
LTCL AMusA

Executive Officer



Ms Lisa Connaughton Dip Comms

Personal Assistant to Professor Middleton

Research Staff



Ms Simeon Dale RN BA(Hons)

Clinical Project Coordinator
Quality in acute stroke care project



Ms Nissa Allnutt BA (Psych Hons)

Research Assistant



Ms Therese Fletcher RN BAppSc (Nursing) Grad Dip Ed

Research Assistant



Mr Jed Duff RN BN Grad Dip MN

Clinical Research Fellow
St Vincent's Private Hospital



Ms Lyn Chakerian RN BN

Project Officer
Australian Nurse Practitioner Project (AUSPRAC)



Ms Fix Sangvatanakul RN BN

Currently, Research Assistant/ St Vincent's Hospital RN
Previously, Inaugural ACU Faculty of Health Sciences
Supported Honours Student and St Vincent's Private
Hospital New Graduate (2008)



Ms Elizabeth Maher RN Grad Dip H Admin

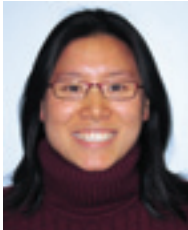
Research Assistant
Pressure Ulcer Preventative Program in Perioperative Care

SV&MHS Clinicians and Students



Asmara Jammali-Blasi RN BN

ACU Faculty of Health Sciences Supported Honours Student and
RN Sacred Heart Hospice



Francesca Li RN BN

ACU Faculty of Health Sciences Supported Honours Student and
New Graduate, St Vincent's Hospital



Serena Knowles RN BN(Hons) GradDipInfM
GradCertClinNsg

PhD Candidate and
Clinical Nurse Specialist, Intensive Care Services
St Vincent's Hospital



Fiona Bailey RN BAppSc(Nursing) MCH MEd(Adult Education)

PhD Candidate and
Clinical Nurse Consultant, St Vincent's Hospital



Sally Sutherland Fraser RN Cert Periop, BEd (Adult Ed) MEd

Clinical Nurse Consultant
Perioperative Practice Development, SESIAHS
NRI Secondee (St Vincent's Hospital)



Melissa Brunner BAppSc (Sp Path) CPSP SPAA

Senior Speech Pathologist
Stroke Care Unit, St Vincent's Hospital

ACU Staff who also are NRI PhD Students



Peta Drury Dip Nursing BN MN

PhD candidate
Lecturer, School of Nursing NSW & ACT
ACU National



Rose McMaster RN DAppSc (Nursing) GradDipEd(Nursing)
MN(Hons)

PhD Candidate
Senior Lecturer and Assistant Head,
School of Nursing NSW & ACT
ACU National



Jane Allnutt RN RM DipTeach(Nursing) BSc MPH

PhD Candidate
Lecturer, School of Nursing NSW & ACT
ACU National



Nurses leading multidisciplinary research

The primary aim of the NRI is to lead high calibre patient-focussed multidisciplinary research. We also aim to support and develop clinicians at SV&MHS to connect with research, either in the capacity of a clinician wanting to conduct a research project or avail themselves of best available evidence on practice issues thereby potentially enhancing the provision of care and patient outcomes.

The NRI provides expert research advice to clinicians in the following areas:

- finding the latest evidence regarding clinical practice issues by locating relevant systematic reviews and meta-analyses;
- choosing the right research method for a study;
- identifying the sample size;
- developing research proposals;
- developing grant applications;
- developing questionnaires;
- coding and managing data;
- support with quantitative analysis programs such as SPSS and qualitative theme extraction;
- preparing and writing reports, peer-reviewed journals and conference presentations.



Current grants awarded in previous years[^]

- Feb 2004 **Middleton S**, Levi C, Griffiths R, Grimshaw J, Ward J. Project grant. Clustered Randomised Controlled Trial of a multidisciplinary, team building intervention to manage Fever, Sugar and Swallowing (FeSS) in Acute Stroke. National Health and Medical Research Council 2005: \$126,475, 2006: \$142,825, 2007: \$129,250. Total funds awarded \$398,550 (Project ID: 353803).
- Jan 2006 Zwar NA, **Middleton S**, Comino EJ, Marks G. Project grant. Nurse-facilitated care planning for patients with chronic obstructive pulmonary disease (COPD) in general practice. National Health and Medical Research Council Primary Health Care Project Grant: 2006: \$176,475; 2007: \$189,775; 2008: \$76,000. Total funds awarded: \$442,250 (Project ID: 350883).
- Jul 2006 Gardner G, Gardner A, **Middleton S**, Della P. Leading responsive healthcare reform: the role of the nurse practitioner in health workforce re-design. Australian Research Council Linkage grant. 2006/07: \$262,500, 2007/08: \$250,000; 2008/09: \$62,500. Total ARC funding: \$575,000. Industry partners: National Nursing and Nurse Education Taskforce: cash: \$50,000, in-kind \$200,000; Dept of Health, Western Australia: cash: \$30,000, in-kind \$172,920; Dept of Health, South Australia: cash: \$30,000, in-kind \$120,000; Queensland Health: cash \$10,000, in-kind \$120,000; ACT Health: cash \$30,000; NSW Health: in-kind \$120,000; Australian Nursing and Midwifery Council: in-kind \$200,000. Total industry contribution: cash: \$150,000 ; in-kind \$932,920
- Nov 2007 **Middleton S**, Cheung W, Levi C, Griffiths R, Grimshaw J, Ward J, D'Este C. Managing diabetes and hyperglycaemia post-stroke: Measuring clinician behaviour change following evidence implementation. ADS-Servier National Diabetes Strategy Grants. Total funds awarded: \$20,068.
- Nov 2007 **Middleton S**, Levi C, Griffiths R, Grimshaw J, Ward J, D'Este C, **Dale S**. Managing fever, hyperglycaemia and dysphagia post-stroke: Measuring clinician behaviour change following evidence implementation. College-Consortium Fund. College of Nursing. Total funds awarded: \$30,009.
- Nov 2007 **Middleton S**, **McMaster R**. Homelessness & Housing Support Outcome Study. Catholic Healthcare (through Mercy Arms Community Care). 2008: \$19,600; 2009: \$19,600. Total funds awarded: \$39,200.

[^] Nursing Research Institute researchers and SV&MHS staff shown in bold

Current grants awarded in 2008 and 2009[^]

- Jan 2008 Chan DKY, Levi C, **Middleton S**, Chen JXC, Cordato D, Pollack M. Project grant. Health Services Research: A Randomised Controlled Trial to evaluate a Model of Comprehensive Stroke Care. National Health and Medical Research Council. 2008: \$173,150; 2009:\$213,150; 2010: \$113,150. Total funds awarded: \$499,450. (Project ID: 510275).
- Feb 2008 McCluskey A, **Middleton S**. Translating Evidence into Practice: Helping People with Stroke to Get out of the House. National Stroke Foundation. 2008: \$19,854.
- May 2008 **Middleton S, Elmes T, Burke V, Sheehan M, Sutherland-Fraser S**. Pressure Ulcer Prevention Program (PuPP) in perioperative care: Evaluation of a nursing behaviour change education intervention. Friends of the Mater Foundation. 2008: \$ 15,992.
- Oct 2008 **Middleton S, Allnutt J, Hawley R**, Gardner G, Gardner A, Della P. Investigating the Nurse Practitioner Service in New South Wales. ACU National Faculty Research Grant. 2008: \$14,965.
- Oct 2008 **Walker K, Duff J, Omari A, Dewsnap K, Middleton S**. A multi-disciplinary project to improve VTE prevention in the private hospitals sector and at SVPH St Vincents Clinic Foundation Multidisciplinary Patient/Client Focused Grants 2008 \$25, 000.
- Oct 2008 **Walker K, Duff, J, Omari, A, Dewsnap, K, Middleton, S**. A multi-disciplinary project to improve VTE prevention in the private hospitals sector and at St Vincent's Private Hospital Sponsorship, Sanofi-Aventis \$9, 000.
- Oct 2008 **Walker K, Duff J, Omari A, Dewsnap K, Middleton S**. A multi-disciplinary project to improve VTE prevention in the private hospitals sector and at St Vincent's Private Hospital SV&MHS Nursing Research Grants \$16, 600.
- Jan 2009 **Middleton S, Marcus R, Faux S, O'Loughlin G, Dale S**. Improving management of fever, hyperglycaemia and swallowing dysfunction in acute stroke at St Vincent's Hospital. St Vincent's Clinic Foundation. 2009: \$50,000.

[^] Nursing Research Institute researchers and SV&MHS staff shown in bold

Current grants awarded in 2008 and 2009 - continued[^]

- Jan 2009 **Walker K, Duff J, Wardell A, Omari A, Devenish H, Dewsnap K & Middleton S.** St Vincent's Private Hospital Venous Thromboembolism (VTE) Prevention Project. St Vincent's Clinic Foundation. 2009: \$25,000.
- Jan 2009 **Knowles S, Wright R, Breeding J, Storer K, Welch S, Middleton S, Hardy J, Oliver E.** Multi-disciplinary implementation of an evidence-based practice: Collaborative quality improvement in Intensive Care Unit (ICU) patient care. Multi-disciplinary Patient/ Client Focused Grants, St Vincent's Clinic Foundation. 2009: \$19,500.
- Sep 2009 **Middleton S, McInnes E.** GMCT Scoping Study. Sax Institute. 2009 \$30,000.

[^] Nursing Research Institute researchers and SV&MHS staff shown in bold



Professor Kim Walker and Professor Sandy Middleton
SV&MHS ACU Nursing Research Institute

Grants awarded to commence in 2010[^]

- Jan 2010 **Brunner M, Markus R, McInnes E, Middleton S, Trudinger C Van Vliet P.** Coordinated Multidisciplinary Circuit Therapy Class. St Vincents Clinic Foundation. 2010 \$25,000.
- Jan 2010 **Bailey F, Middleton S, McInnes E,** Elliott D. Management of medication incidents at St Vincent's Hospital. St Vincents Clinic Foundation. 2010, \$25,000.
- Jan 2010 **Duff J, Middleton S, Omari A , Walker K. McInnes E.** The 'PaMP' VTE Trial (Patient Mediated Prevention of VTE Trial). St Vincents Clinic Foundation. 2010, \$25,000.

[^] Nursing Research Institute researchers and SV&MHS staff shown in bold



Ms Maeve Tumulty, Director of Nursing and Patient Care, St Vincent's Hospital, Professor Greg Craven, Vice-Chancellor, Australian Catholic University and Clinical Associate Professor Leslie Everson, Director of Operations, St Vincent's Hospital

Peer-reviewed publications 2008 and 2009[^]

Middleton S, Levi C, **Dale S**. Arrival time to stroke unit as crucial a measure as arrival time to emergency department. *Stroke* 2008; 39 (1): 5. Published on-line 29 November 2007. (*Journal Impact Factor 5.855*).

Gattellari M, Worthington J, Zwar N, **Middleton S**. Barriers to the use of anticoagulation for non-valvular atrial fibrillation (NVAf): A representative survey of Australian Family Physicians. *Stroke* 2008; 39: 227-230. Published on-line 29 November 2007 (*Journal Impact Factor 5.855*).

Zwar N, Hermiz O, Hasan I, Comino E, **Middleton S**, Vagholkar S, Marks G. A cluster randomised controlled trial of nurse and GP partnership for care of Chronic Obstructive Pulmonary Disease. *BMC Pulmonary Medicine* 2008; 8: 8.

Middleton S, Griffiths R, Fernandez R, Smith B. Nursing Practice Environment: How does one Australian hospital compare with Magnet Hospitals? *International Journal of Nursing Practice* 2008; 15 (5): 366-372.

Gattellari M, Worthington J, Zwar N, **Middleton S**. The management of non-valvular atrial fibrillation (NVAf) in Australian, general practice: bridging the evidence-practice gap. A national, representative needs assessment survey. *BMC Family Practice*. 2008, 9:62. Available at <http://www.biomedcentral.com/1471-2296/9/62>.

Hill K, **Middleton S**, O'Brien E, Lalor E. Implementing clinical guidelines for acute stroke management: Do nurses have a role? *Australian Journal of Advanced Nursing*. 2009 26 (3):53-58

Middleton S, Levi C, Ward J, Grimshaw J, Griffiths R, D'Este C, **Dale S**, Cheung NW, Quinn C, Evans M, Cadilhac D. Fever, hyperglycaemia and swallowing dysfunction management in acute stroke: A cluster randomised controlled trial of knowledge transfer. *Implementation Science* 2009. 4: 16.

Allnutt J, **McMaster R**, **Hillege S**, **Allnutt N**, Gardner G, Gardner A, Della P, **Middleton S**. Clients' perception of the role of Nurse Practitioners in Australia. *Australian Health Review*. In press. Accepted 2 March 2009.

Gardner A, Gardner G, **Middleton S**, Della P. The status of Australian Nurse Practitioners: Findings from the first national census. *Australian Health Review*. In press. Accepted 9 March 2009.

Middleton S, **Walker K**, Leigh T. Why Fellowship? Peak professional bodies, peer recognition and credentialing in Australia. *Collegian*. Epub ahead of print 12 August 2009. Available at <http://dx.doi.org/10.1016/j.colegn.2009.06.002>.

[^] Nursing Research Institute researchers and SV&MHS staff shown in bold

Peer-reviewed publications – continued[^]

Knowles S, Rolls K, Elliott D, Hardy J, **Middleton S**[^]. Patient care guidelines: A telephone survey of intensive care practices in New South Wales. *Australian Critical Care*. In press. Accepted for publication 7 October 2009.

Walker K. Curriculum in crisis, pedagogy in disrepair: A provocation. *Contemporary Nurse* 2009. 32; (1/2): 19.

Davis D & **Walker K**. The corporeal, the social and space/place: exploring intersections from a midwifery perspective. *Gender, Place and Culture: A Journal of Feminist Geography* In press. Accepted July 2009.

Davis D & **Walker K**. Re-discovering the material body through an exploration of theories of embodiment. *Midwifery* In press. Accepted Dec 2008.

Walker K & Holmes CA The 'order of things': Tracing a history of the present through a re-reading of the past in nursing education. *Contemporary Nurse (Special Issue)* 2008. 30(2): 106-118.

Walker, K. Practice Development: Who cares and so what? (Lead editorial) *Journal of Clinical Nursing*, 2009. 18; (2). Published online 11 December 2008

Aguilera J & Walker K. A New Framework to ensure excellence in patient-focused care: The nursing directorate's balanced scorecard approach. *Asia-Pacific Journal of Health Management* 2008. 2 (3):

McInnes E, Dumville, J, Bell-Syer S, Legood R, Cullum, N. *Support surfaces for pressure ulcer prevention*. (Cochrane Review). The Cochrane Database of Systematic Review. Issue 4, 2008.

Chiarella M & **McInnes E**. Morality, legality and reality - the role of the nurse in maintaining standards of care. *Australian Journal Advanced Nursing* 2008; 26(1):77-83.

McInnes, E & Wimpenny, P. Using the qualitative assessment and review instrument (QARI) software to synthesise studies on older people's views and experiences of falls prevention *International Journal of Evidence-Based Healthcare* 2008;(6) 3:337-334.

Chiarella M, Thoms D, Lau C, **McInnes E**. An overview of the competency movement in nursing & midwifery. *Collegian* 2008;15(2):43-82.

Bunn F, Dickinson A, Barnett-Page E, **McInnes E**, Horton K. A systematic review of older peoples' perceptions of facilitators and barriers to participation in falls prevention interventions. *Ageing and Society* 2008,28(4);449-472.

[^] Nursing Research Institute researchers and SV&MHS staff shown in bold

Peer-reviewed publications

Arising from collaborative work, although not an author

Hackett M, Glozier N, Jan S, Lindley R. Psychological Outcomes in Stroke: the POISE observational stroke study protocol. *BMC Neurology* 2009; 9: 24. (**Middleton S** listed as an associated investigator).

Cochrane Wounds Group Evidence-based wound care in the UK: a response to David Leaper's Editorial in International Wound Journal April 2009. *International Wound Journal*. 2009; 6(4) (group authorship includes **McInnes E**).

Book Chapters[^]

Walker, K 2009 Philosophy and nursing: Exploring the truth effects of history, culture and language. In: *Contexts of Nursing: An Introduction (3rd Edition)* Daly, J, Speedy, S & Jackson, D (Eds) Sydney: Elsevier. Pp. 65-79.

Walker K 2009 My Life, my choice? Evidence, ethics and autonomy in contemporary clinical care. In: SJ Murray & D Holmes (eds) *Critical Interventions in the Ethics of Healthcare*, Ashgate Publishing: UK. Pp 15-32.

Walker, K 2008 Reading research and scholarship: A critical approach to effective understanding. In: S Borbasi & D Jackson (eds) *Navigating the Maze of Nursing Research: An Interactive Learning Adventure (2nd ed)*, Elsevier: Sydney. Pp 202-225.

[^] Nursing Research Institute researchers and SV&MHS staff shown in bold



Professor Greg Craven, ACU National and Clinical Associate Professor Leslie Everson, SV&MHS

Published abstracts[^]

Jordan L, Wyer M, Mackey E, Coughlan K, Ferry C, **Middleton S**. Continence Management in Acute Stroke: A Survey of Current National Practices. *Internal Medicine Journal* 2008; 38: 4 A81.

McCluskey A, Cannell J, **Middleton S**, English C, Upton-Greer L, Vratisstas A. Implementing Stroke Research Evidence. *Internal Medicine Journal* 2008; 38: 4 A83.

Barnsley L, McCluskey A, **Middleton S**. What people say about travelling outdoors after their stroke: A qualitative study. *Internal Medicine Journal* 2008; 38: 4 A87.

Middleton S, Levi C, D'Este C, **Dale S**, Griffiths R, Grimshaw J, Ward J, Evans M, Quinn C, Cadilhac D. Death, Dependency And Health Status 90 Days Following Stroke In NSW: Baseline Results From The Quality In Acute Stroke Care (QASC) Project. Smart Strokes 2009, 5rd Australasian Nursing and Allied Health Stroke Conference. 6-7 August 2009. Star City, Sydney. P.16.

Sangvatanakul P, Hillege S, Lalor E, Levi C, Hill K, **Middleton S**. Setting Stroke Research Priorities: The Consumer Perspective. 5rd Australasian Nursing and Allied Health Stroke Conference. 6-7 August 2009. Star City, Sydney. P.30.

Lannin N, Cadilhac D, Anderson C, Price C, Levi C, **Faux C**, Donnan G, **Middleton S**. The Australian Stroke Clinical Registry: An innovation in stroke management and promoting quality. Smart Strokes 2009, 5rd Australasian Nursing and Allied Health Stroke Conference. 6-7 August 2009. Star City, Sydney. P.14.

Lannin N, Ada L, Lindley R, **Middleton S**, McCluskey A, Quinn C. Identifying research priorities for stroke services in New South Wales: A Delphi study. Smart Strokes 2009, 5rd Australasian Nursing and Allied Health Stroke Conference. 6-7 August 2009. Star City, Sydney. P.39.

Middleton S. Undertaking research: From scathingly brilliant idea to published paper. Vascular09 conference. Shangri-La hotel, Sydney, 1 -4 October 2009. P. 87.

[^] Nursing Research Institute researchers and SV&MHS staff shown in bold

Reports and Monographs 2008 and 2009[^]

Middleton S, Allnut J, Allnut N, McMaster R, Hillege S, O'Connell J. Clients' Understanding of the Role of Nurse Practitioners in Western Australia: Report for Western Australian Department of Health. February 2008. P.1 – 28.

Coalition of National Nursing Organisations. *National Nursing Research Symposium 2008 Report*. CONNO. September 2008. P. 1 - 22.

Gardner G, Garder A, **Middleton S**, Della P. *Report of the First Australian National Nurse Practitioner Survey*. October 2008. P. 1-15.

Middleton S, Hawley R, McMaster R. *Evaluation of the Housing Support Program at Catholic Healthcare (formerly Mercy Arms Community Care): Interim Report*. November 2008. P.1-19.

Middleton S. *Managing Fever, Hyperglycaemia and Dysphagia Post Stroke: Measuring Clinician behaviour change following evidence implementation*. Interim Report to College Consortium Fund. December 2008. P. 1-24.

Middleton S, Hillege S, Sangvatanakul P. *Development of Acute Stroke, Rehabilitation and Recovery 'Consumer Focused' Stroke Guideline Recommendations*. Report for the National Stroke Foundation. December 2008. P. 1- 17.

McMaster R, Hawley R, Fletcher T, Middleton S. *Evaluation of the Housing Support Program at Catholic Healthcare*. Report to Catholic Healthcare. May 2009. P 1-40.

[^] Nursing Research Institute researchers and SV&MHS staff shown in bold



Conference participation 2008 and 2009[^]

- Aug 2008 Jordan L, Wyer M, Mackey E, Coughlan K, Ferry C, **Middleton S**. *Continence Management in Acute Stroke: A Survey of Current National Practices*. Stroke 2008. 13-15 August 2008, Star City Hotel, Sydney, NSW.
- Aug 2008 McCluskey A, Cannell J, **Middleton S**, English C, Upton-Greer L, Vratisstas A. *Implementing Stroke Research Evidence*. Workshop (1.5 hours). Stroke 2008. 13-15 August 2008, Star City Hotel, Sydney, NSW.
- Aug 2008 Barnsley L, McCluskey A, **Middleton S**. *What people say about travelling outdoors after their stroke: A qualitative study*. Stroke 2008. 13-15 August 2008, Star City Hotel, Sydney, NSW.
- Aug 2008 **Middleton S**. *Models for turning practice into research – engaging clinicians in research*. **Invited Panel Discussion Member**. Coalition of National Nursing Organisations. 22 August 2008, Radisson on Flagstaff, Melbourne, Victoria.
- Oct 2008 Gardner A, Gardner G, **Middleton S**, Della P. Findings from the first national survey of Australian Nurse Practitioners. 4th Annual Australian Nurse Practitioner Association Conference: Nurse Practitioners: A solution for the future. 26-28 October 2008, Telstra Dome, Melbourne.
- Mar 2009 **Middleton S**, Levi C, D’Este C, **Dale S**, Griffiths R, Grimshaw J, Ward J, Evans M, Quinn C, Cadilhac D. Planning Post-discharge Needs: Death, Dependency and Health Status 90 Days following Acute Stroke in Australia. Royal College of Nursing UK (RCN) International Nursing Research Conference. Looking back, moving forward. 24 – 27 March 2009. Cardiff City Hall, Cardiff, Wales. P.92, 93
- Mar 2009 **Middleton S**, Gardner G, Gardner A, Della P, Gibb M, Kain V, Duffield C. An innovative approach to work sampling: Investigating nurse practitioner work activities in Australia. Royal College of Nursing UK (RCN) International Nursing Research Conference. Looking back, moving forward. 24 – 27 March 2009. Cardiff City Hall, Cardiff, Wales. P.69.
- Mar 2009 Gardner A, Gardner G, **Middleton S**, Della P. The first national census of Australian nurse practitioner. Royal College of Nursing UK (RCN) International Nursing Research Conference. Looking back, moving forward. 24 – 27 March 2009. Cardiff City Hall, Cardiff, Wales. P.54.
- Mar 2009 Gardner G, Gardner A, **Middleton S**, Della P. Investigating the work pattern of Australian nurse practitioners using work sampling methodology. Royal College of Nursing UK (RCN) International Nursing Research Conference. Looking back, moving forward. 24 – 27 March 2009. Cardiff City Hall, Cardiff, Wales. P.76.

Conference participation 2008 and 2009[^] - continued

- Apr 2009 **Middleton S.** Invited Presenter. Implementing Guidelines: What you need to know. Venous Thrombo Embolism Workshop. St Vincent's Hospital. 3 April 2009.
- May 2009 O'Brien E, Hill K, **Middleton S.** Clinical guidelines for acute stroke management: Do nurses have a lead role for implementation? Inaugural Nursing and Midwifery Research and Innovative Practice Conference: 'Research for Health'. 21 May 2009, Royal North Shore Hospital, Sydney.
- May 2009 Gardner A, Gardner G, **Middleton S,** Della P The role of the Nurse Practitioner. Scope of Practice Conference, 15th May 2009, Townsville, QLD.
- June 2009 **Middleton S,** Jordan L, Wyer M, Mackey E, Coughlan K, **Allnut N.** National Stroke Continence Survey. Improving Stroke Care and Recovery. St Vincent's Hospital, 4th and 5th June 2009, Sydney. **Invited Speaker**
- June 2009 **Middleton S.** Stroke: Into the Future. Improving Stroke Care and Recovery. St Vincent's Hospital, 4th and 5th June 2009, Sydney. **Invited Speaker**
- Aug 2009 **Middleton S,** Levi C, D'Este C, Dale S, Griffiths R, Grimshaw J, Ward J, Evans M, Quinn C, Cadilhac D. Death, Dependency And Health Status 90 Days Following Stroke In NSW: Baseline Results From The Quality In Acute Stroke Care (QASC) Project. Smart Strokes 2009, 5rd Australasian Nursing and Allied Health Stroke Conference. 6-7 August 2009. Star City, Sydney.
- Aug 2009 **Sangvatanakul P,** Hillege S, Lalor E, Levi C, Hill K, **Middleton S.** Setting Stroke Research Priorities: The Consumer Perspective. 5rd Australasian Nursing and Allied Health Stroke Conference. 6-7 August 2009. Star City, Sydney.
- Aug 2009 Lannin N, Cadilhac D, Anderson C, Price C, Levi C, **Faux S,** Donnan G, **Middleton S.** The Australian Stroke Clinical Registry: An innovation in stroke management and promoting quality. Smart Strokes 2009, 5rd Australasian Nursing and Allied Health Stroke Conference. 6-7 August 2009. Star City, Sydney.
- Aug 2009 Lannin N, Ada L, Lindley R, **Middleton S,** McCluskey A, Quinn C. Identifying research priorities for stroke services in New South Wales: A Delphi study. Smart Strokes 2009, 5rd Australasian Nursing and Allied Health Stroke Conference. 6-7 August 2009. Star City, Sydney. Poster.
- Aug 2009 Haertsch M, Haines M, Castaldi P, Elliott E, **Middleton S,** Redman S. A method of retrospective assessment of the organisational structures and activities of clinical networks. Emerging Health Policy Research Conference, USyd, 19 August 2009.

Conference participation 2008 and 2009^

- Sept 2009 Lannin N, Cadilhac D, Anderson C, Price C, Levi C, **Faux C**, Donnan G, **Middleton S**. Challenges to establishment of the Australian Stroke Clinical Registry (AuSCR) to promote quality improvement in stroke care. Stroke Society of Australasia Annual Scientific Meeting in conjunction with the 6th Asia Pacific Conference for Stroke. 6-10 September 2009, Cairns, Australia. Poster.
- Sept 2009 **Middleton S**, Levi C, D'Este C, **Dale S**, Griffiths R, Grimshaw J, Ward J, Evans M, Quinn C, Cadilhac D. 90-Day Mortality And Morbidity Post Acute Stroke: Baseline Results From The Quality In Acute Stroke Care (QASC) Project. Stroke Society of Australasia Annual Scientific Meeting in conjunction with the 6th Asia Pacific Conference for Stroke. 6-10 September 2009, Cairns, Australia.
- Sept 2009 **Middleton S**. Cluster randomized controlled trials. Why are they necessary in health services research? What are the ethical and feasibility issues? Workshop Session: Health Services Research Methods. Stroke Society of Australasia Annual Scientific Meeting in conjunction with the 6th Asia Pacific Conference for Stroke. 6-10 September 2009, Cairns, Australia.
- Sept 2009 **Middleton S**. Ethical issues in conducting stroke research. Invited Plenary Panel Member. Stroke Society of Australasia Annual Scientific Meeting in conjunction with the 6th Asia Pacific Conference for Stroke. 6-10 September 2009, Cairns, Australia.
- Oct 2009 **Middleton S**. Undertaking research: From scathingly brilliant idea to published paper. Vascular09 conference. Shangri La Hotel, Sydney. 1-4 October 2009.
- Nov 2009 **Middleton S**, **Dale S**, Levi C, Ward J, Griffiths R, Grimshaw J. Challenges in Undertaking a Large Cluster Randomised Controlled Trial To Change Clinician Behaviour. The Joanna Briggs Institute 2009 International Convention, Adelaide, November 2009.
- Nov 2009 McCluskey A, **Middleton S**. Implementing evidence: A case study in community stroke rehabilitation. 6th Health Services & Policy Research Conference. Brisbane 25-27 Nov 2009.
- Oct 2008 **Walker K**. Panel Discussion participant: Audience questions and answers on workforce issues. Australia n Private Hospital Association 28th National Congress, Adelaide Convention Centre, October 26-28.
- Nov 2009 **McInnes E**, Seers K, Tutton L. The Joanna Briggs Institute 2009 International Convention Ripples to Revolution 'From bed to bedside'. Adelaide 18-19 Nov2009.

Awards 2008 and 2009

September 2008

Walker K, Duff J, Omari A, Dewsnap K, Evatts-Gale J, & Aguilera J

The Australian Council on Healthcare Standards Quality Improvement Awards (\$2, 000)

Winner, Health Care Indicators category

A Multi-disciplinary Model of Care to Improve Warfarin Anticoagulation at St Vincent's Private Hospital.

October 2008

Walker K, Duff J, Omari A, Dewsnap K, Evatts-Gale J, & Aguilera J

The Australian Private Hospitals Association /Baxter Awards for Quality and Excellence

Winner, Clinical Excellence in Patient Outcomes

A Multi-disciplinary Model of Care to Improve Warfarin Anticoagulation at St Vincent's Private Hospital.

^ Nursing Research Institute researchers and SV&MHS staff shown in bold



Community engagement (professional) 2008 and 2009

S Middleton

Member, National Stroke Foundation. Australia and New Zealand Stroke Clinical Guidelines Revision Expert Working Group and Executive Sub-group member. April 2009 to present.

Chair, Scientific Committee. Stroke Society of Australasia Annual Scientific Meeting and Smart Strokes 4rd Australasian Nursing and Allied Health Stroke Conference. April 2008.

Member, St Vincent's Clinic Foundation. Medical Grant Review Panel. 2007, 2008, 2009.

Chair, Steering Group. Australian Stroke Registry. October 2008 to present.

Member, Australian Stroke Coalition. Workforce Training and Professional Development Working Group. October 2008 to present.

Member (Ministerial appointment), Greater Metropolitan Clinical Taskforce Governing Committee, a Health Priority Taskforce (HPT) reporting to the Director General for Health and, unlike other HPTs, also directly to the Minister for Health. October 2006 to present.

Chair, Outcomes Committee. AVERT Trial. A multi-site NHMRC-funded randomized controlled trial of early mobilization following stroke. November 2006 to present.

Member, Clinical Council, Clinical Excellence Commission. May 2005 to Sept 2009.

Member, Australian Council on Healthcare Standards Research Advisory Panel. January 2006 to present

Chair, Ethics Committee, College of Nursing. 2005 to present.

Chair, Quality in Acute Stroke Care Project Advisory Group. 2004 to present.

Member, Greater Metropolitan Clinical Taskforce Stroke Co-ordinating Committee. August 2005 to present.

Community engagement (professional) 2008 and 2009

S Middleton (continued)

Member, Greater Metropolitan Clinical Taskforce Stroke Research Working Group. Sept 2004 to present.

Member, Faculty of Health Sciences Board, ACU National. March 2005 to present.

School of Nursing NSW & ACT Research Committee, ACU National. March 2005 to present.

Member, Faculty of Health Sciences Research Standing Committee. January 2006 to present

K Walker

Member of the editorial committee of the bi-lingual journal (French/English) *Aporia*. July 2008 – present

Member of Advisory Editorial Board, *Contemporary Nurse*. October 2006 present

School of Nursing NSW & ACT Research Committee, ACU National. 2008 to present.

E. McInnes

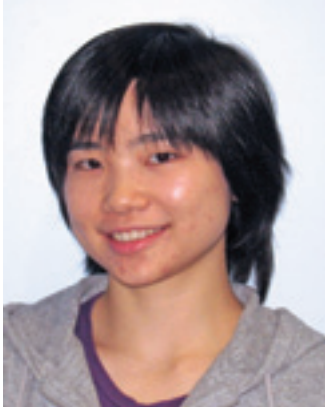
Editor and author for Cochrane Wounds Group.

Member, International Editorial Advisory Board *World-views in Evidence Based Nursing*.

Profiles of Current Research and Researchers

Nursing Research Institute researchers and SV&MHS staff shown in bold





Pukkaporn (Fix) Sangvatanakul

ACU Faculty of Health Science
Supported Honours Student 2008
Research Assistant 2009

After discussions with Professor Sandy Middleton, I was motivated to continue my studies at ACU National and to undertake an honours degree. She became my principle supervisor and I undertook a project looking at stroke research priorities from the consumer perspective. I was fortunate to receive funding from the ACU Faculty of Health Sciences Student Support Scheme and also support from St. Vincent's Private Hospital to enable me to complete my honours year at the same time as undertaking my graduate nurse position. This was the first time this scheme had been offered. Throughout my honours degree I felt included in the research culture and everyone was very supportive. After completing my honours year I have continued to gain experience in research working as a Research Assistant on another project. I think that the opportunities to be involved in research and receive research support at SV&MHS will only grow now that the NRI has been established and is located on campus at St. Vincent's Hospital.

Setting Stroke Research Priorities: The Consumer Perspective

Sangvatanakul P ¹, Hillege S ², Lalor E ³, Levi C ⁴, Hill K ⁵, Middleton S ⁶

¹ ACU Faculty Supported Honours Student, ² Senior Lecturer, School of Nursing and Midwifery, University of Western Sydney, ³ Chief Executive Officer, National Stroke Foundation, ⁴ Director, Priority Research Centre for Brain & Mental Health, John Hunter Hospital, ⁵ Manager, Guidelines Programs, National Stroke Foundation, ⁶ Professor of Nursing Research and Director SV&MHS ACU Nursing Research Institute

Research design: Survey

Project Duration: 2008

Aim

- To test a method of engaging stroke consumers in research priority setting using a quantitative approach; and to determine consumer views on stroke research priorities for recommendations with lower levels of evidence and expert consensus opinion as published in the Australian stroke clinical practice guidelines.

Method

Stroke survivors and carers who were members of the 'Working Aged Group – Stroke' consumer support group, attended two separate facilitated group sessions and complete a self-administered questionnaire at each session. The initial questionnaire determined whether recommendations were 'worth' researching; and, if researched, what potential impact they likely would have on patient outcomes. The second questionnaire ranked the high rating recommendations collated from the first questionnaire, in order of research priorities from the consumer perspective.

Results/ Study Progress

18 and 20 participants attended the two sessions respectively. Recommendations rated by at least half the participants as 'worth' researching have been collated. Recommendations also have been ranked for their research priorities. Results were presented at the 2009 Smart Strokes Nursing and Allied health Conference and a manuscript is in preparation for submission to a peer reviewed journal.

Report

Middleton S, Hillege S, Sangvatanakul P. Development of Acute Stroke, Rehabilitation and Recovery 'Consumer Focused' Stroke Guideline Recommendations. Report for the National Stroke Foundation. December 2008. P. 1 - 17.

Conference Presentation

Sangvatanakul P, Hillege S, Lalor E, Levi C, Hill K, Middleton S. Setting Stroke Research Priorities: The Consumer Perspective. 5rd Australasian Nursing and Allied Health Stroke Conference. 6-7 August 2009. Star City, Sydney.



Asmara Jammali-Blasi

ACU Faculty of Health Sciences Supported Honours
Student 2009
Nursing New Graduate
Sacred Heart Hospice

I have been working with the NRI for the past 12 months as part of a faculty honours support scheme. This program has allowed me to complete my nursing honours degree while also working as a clinician at St Vincent's hospital. My research is linked with the larger QASC study headed by Prof Sandy Middleton and involves looking at 90-day outcomes following a stroke and care in a dedicated stroke unit. The NRI has given me invaluable support during this project as a novice, by mentoring me through the research process. This program has also contributed to my critical appraisal skills which are a necessary part of current nursing and keeping up with evidence based practice.

90-day Outcomes in a Cohort of Patients Admitted to a Stroke Unit

Jammali–Blasi A¹, McInnes E², Markus R³, Faux S⁴, O’Loughlin G⁵, Dale S⁶, & Middleton S⁷

¹ ACU Faculty Supported Honours Student, ² Senior Research Fellow, SV&MHS ACU Nursing Research Institute ³ Director, Stroke Care Unit, St Vincent’s Hospital, ⁴ Director, Rehabilitation Unit St Vincent’s Hospital, ⁵ Director, Allied Health, St Vincent’s Hospital, ⁶ Clinical Project Coordinator SV&MHS ACU Nursing Research Institute ⁷ Professor of Nursing Research and Director SV&MHS ACU Nursing Research Institute

Research Design: Clinical epidemiology; cohort data linkage

Project Duration: 2009 – present

Aims

- To investigate the 90-day outcomes of death, disability, dependency and health-status post-stroke for patients admitted to an inner city acute stroke unit.
- To examine associations between 90-day outcomes and inpatient data including pre-morbid risk factors, demographics and stroke characteristics.

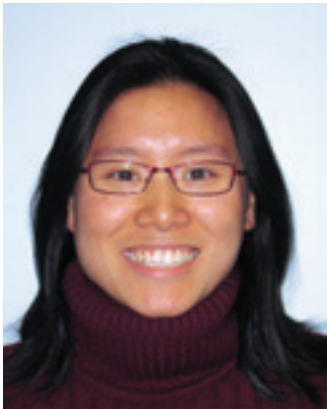
Method

This study involves the analysis of pre-collected data from a single sample from two sources, namely, the QASC baseline database and the St Vincent’s Stroke Unit Register. A quantitative, prospective cohort design was chosen in order to analyse data for the outcomes of interest.

Forty-six participants were consecutively enrolled during the period from January 2006 to September 2007 by a clinical research assistant based at St Vincent’s Hospital Darlinghurst. Variables of interest (stroke risk factors, demographics and stroke clinical features) were extracted from the St Vincent’s Stroke Unit Register which contains data from all stroke unit admissions. Data regarding 90-day outcomes (death, dependence, disability and health status) following a stroke were obtained from the QASC trial database.

Results/ Study Progress

Analysis of the linked datasets is underway. A manuscript is in preparation for submission to a peer reviewed journal.



Francesca Li

ACU Faculty of Health Sciences Supported
Honours Student 2009
New Graduate, St Vincent's Hospital.

I completed a research project which tests an intervention to see whether we can improve nurses' compliance with best practice venous thromboembolism mechanical prevention. I am doing this project through the Bachelor of Nursing (Honours) at Australian Catholic University and I was fortunate enough to receive the Faculty of Health Sciences Honours Student Support Scheme to support me financially whilst working on this project full time.

Entering into the field of research has enabled me to bring my patient care to a higher level where now I know evidence based practice is the nursing gold standard. This honours year has really been an invaluable experience for me and I thank NRI for facilitating this opportunity.

Improving Nurses' Compliance with VTE Prevention Using Educational Outreach

Li F ¹, Walker K ², McInnes L ³, Duff J ⁴, Middleton S ⁵, Omari A ⁶, Aguilera J ⁷

¹ ACU Faculty of Health Sciences Supported Honours Student, ² Professor of Nursing (Applied Research) SVPH and SV&MHS ACU Nursing Research Institute, ³ Senior Research Fellow, SV&MHS ACU Nursing Research Institute, ⁴ VTE Project Facilitator, SVPH, ⁵ Professor of Nursing Research and Director SV&MHS ACU Nursing Research Institute, ⁶ Vascular Physician, St Vincent's Clinic, ⁷ Director of Nursing & Clinical Services, SVPH

Research Design: Pre-test post-test

Project Duration: 2009 – present

Aim

- To examine whether a multi-faceted intervention which includes educational outreach visits (EOVs) improves compliance with best practice VTE mechanical prevention amongst nurses on a neuro-surgical ward at St Vincent's Private Hospital.

This study is a subset of a larger VTE prevention project being conducted at SVPH which is being rolled out by the National Institute of Clinical Studies.

Method

A pre- post-test study design was used to evaluate the impact of a multi-faceted intervention of which EOVs were the core intervention. EOVs consisted of two cycles whereby eligible participants (all nursing staff) (n=25) were provided with short educational sessions to support them to implement best practice VTE mechanical prevention. Baseline, midpoint and endpoint audits of medical records were performed to ascertain the compliance rate with appropriate VTE mechanical prophylaxis.

Results/ Study Progress

Midpoint audit results demonstrated a 41% (20% to 61%) increase in best practice VTE mechanical prevention in medical patients on SVPH's neurosurgery ward. Endpoint audit results will be available towards the end of 2009. A manuscript is in preparation for submission to a peer reviewed journal.



Serena Knowles

PhD Candidate
Clinical Nurse Specialist
Intensive Care Services
St Vincent's Hospital

When the ICU Best Practice committee identified bowel management as an area for practice improvement, I volunteered to undertake a research project into this area as part of my doctoral studies. Professor Middleton is my primary supervisor for my PhD studies at ACU National and with her guidance we have been successful in securing funding from a number of sources, including the St Vincent's Clinic Foundation, the Nurses and Midwives Board of NSW and NaCCOR. Having the opportunity to be located within the Nursing Research Institute and work with colleagues doing active research has fostered my growth as a novice researcher.

Improving Clinical Practice in Intensive Care: Implementation of an Evidenced Based Practice Guideline

Knowles S¹, Middleton S², Hardy J³, Elliott D⁴, & Wright B⁵

¹ PhD Student ACU National and CNS, Intensive Care Services SVH, ² Professor of Nursing Research and Director SV&MHS ACU Nursing Research Institute, ³ Senior Lecturer, University of Sydney, ⁴ Professor Nursing UTS, ⁵ Director of Intensive Care Services, SVH & Intensive Care Unit, SVPH

Research Design: Mixed methods

Project Duration: 2005 – present

Funding: St. Vincent's Clinic Foundation \$25,000 (2007) and \$19,500 (2009); Nurses and Midwives Board of NSW \$17,500; NaCCOR scholarship \$15,000. Total funding received: \$77,000.

Aims

Study 1:

- To identify guidelines and informal procedures in NSW Intensive Care Units (ICUs) and High Dependency Units (HDUs) for 11 practice areas including bowel management.

Study 2:

- To evaluate the effectiveness of an evidence-based bowel management protocol (BMP) within ICUs to improve patient outcomes.
- To evaluate behaviour change in ICU clinicians using a targeted implementation strategy to improve clinical practice.

Method

Study 1: A telephone survey of guidelines and procedures from NSW ICUs and HDUs.

Study 2: Three linked phases conducted in SVH and SVPH ICUs:

Phase 1: Retrospective medical record audit of all patients with a length of stay (LOS) >72 hours over a three month period to determine current practice; self administered medical and nursing staff survey to determine knowledge and attitudes.

Phase 2: Targeted implementation of the new Bowel Management Protocol (BMP).

Phase 3: Prospective medical record audit of all patients with a LOS > 72 hours over a three month period to evaluate impact of BMP on practice; re-administration of staff survey to evaluate impact of implementation strategy on clinician knowledge and attitudes.

Results/ Study Progress

The telephone survey has been completed (response rate 93%) (Study 1). A total of 97 (70%) participants responded to the pre-implementation survey (Study 2, phase 1) and a total of 73 (51%) participants responded to the post-implementation survey (Study 2, phase 2). Medical audits have been conducted (Phases 1 and 3). Further data analyses currently are being undertaken.

Peer Reviewed Publication

Knowles S, Rolls K, Elliott D, Hardy J, **Middleton S[^]**. Patient care guidelines: A telephone survey of intensive care practices in New South Wales. *Australian Critical Care*. In press. Accepted for publication 7 October 2009.



Fiona Bailey

PhD Candidate
Clinical Nurse Consultant, Acute
Pain, Parenteral Nutrition and
Intravenous Access

St Vincent's Hospital

I have been a member of the SVH Medication Incident Committee for over 11 years. During this time I have become aware that the management of medication incidents often doesn't translate to practice change, thus the same type of incidents continue to occur. Professors Doug Elliott, Sandy Middleton and Dr Liz McInnes assisted me to develop a research proposal to undertake this project which will review the management of medication incidents. I am looking forward to be undertaking this project which, I hope, will ultimately lead to an improvement in the way medication incidents are managed.

Examining the Management of Reported Medication Incidents in an Acute Care Hospital

Bailey F¹, Middleton S², McInnes E³, & Elliott D⁴

¹ CNC Acute pain, Parenteral Nutrition and Intravenous Access, ² Professor of Nursing Research and Director SV&MHS ACU Nursing Research Institute, ³ Senior Research Fellow SV&MHS ACU Nursing Research Institute

⁴ Professor and Director of Research, Faculty of Nursing Midwifery and Health, University Technology Sydney

Research Design: Mixed-methods

Project Duration: 2009 – present

Funding: \$25,000 from St Vincent's Clinic Foundation Grant (2010)

Aim

- To gain an understanding of how medication incidents are managed at St Vincent's Hospital and to identify strategies to improve their management.

Method

A retrospective design using content analysis of the descriptions of investigations, findings and resulting actions implemented as reported in the RiskMan electronic incident reporting system will be conducted for reports from 1 January to 31 December 2009. This will enable exploration of the management of medication incidents. Two focus groups will be conducted to explore the factors and influences of reported medication incidents. One will include managers responsible responding to reports of medication incidents, to gain an understanding about their role in managing medication incidents, and to identify strategies to improve their management. The second will involve nurses and others who report incidents, but who do not manage incidents, to ascertain what factors influence willingness to report.

Results/ Study Progress

Ethics application under preparation.



Jed Duff

Clinical Research Fellow
St Vincent's Private Hospital

I have always had a keen interest in quality and patient safety and over the years I have undertaken a number of practice improvement projects. With the help of Professor Walker and Professor Middleton I have been able to develop research skills which have added a level of academic rigor to these projects. This exposure to research has encouraged me to undertake my PhD at ACU National in 2010.

Improving the Uptake of Venous Thromboembolism (VTE) Prevention Guidelines: A Multidisciplinary Practice Improvement Project

Walker K¹, Duff J², Omari A³, Aguilera J⁴, Middleton S⁵, Kelleher K⁶, Dewsnap K⁷ & Devenish H⁸

¹ Professor of Nursing (Applied Research) St Vincent's Private Hospital, ² Clinical Nurse Specialist and Project Facilitator, ³ Vascular Physician, St Vincent's Private Hospital, ⁴ Director of Nursing, St Vincent's Private Hospital, ⁵ Professor of Nursing Research and Director SV&MHS ACU Nursing Research Institute, ⁶ Pharmacist St Vincent's Private Hospital, ⁷ Clinical Nurse Educator St Vincent's Private Hospital, ⁸ Clinical Nurse Educator, St Vincent's Private Hospital

Research Design: Prospective pre and post intervention patient audits

Project Duration: 2008-2009

Funding: \$25,000 was received from the St Vincent's Clinic Foundation for multidisciplinary patient focused research grants and \$16,000 from a St Vincents & Mater Health, Sydney nursing research grant. Total funding received: \$41,000.

Aim

- To design and implement an intervention to increase the uptake of evidence-based VTE prevention guidelines

Method

A multidisciplinary team including medical, nursing, academic, executive, and consumer representation was formed to steer the project. After review of the literature on barriers to VTE guideline uptake the team identified our own barriers to implementation. The four barriers identified were a lack of motivation to change; a lack of system support; a knowledge or awareness deficit; and disputed evidence. Four implementation strategies were selected on the basis of their proven ability to overcome our specific barriers: audit and feedback; documentation and decision support aides; provider education; policy/procedure and evidence dissemination. Pre and post-intervention medical record audits were conducted to determine guideline adherence.

Results/ Study Progress

The project resulted in improvements on all measures. A 'whole of hospital' policy was successfully negotiated and implemented. The percentage of *all* patients that received appropriate VTE prophylaxis increased by 19% ($p=0.021$) from 49% to 68%. Of those, *surgical* patient prophylaxis increased by 21% ($p=0.021$) from 61% to 83% and *medical* patient prophylaxis increased by 26% ($p=0.058$) from 19% to 45%. The percentage of patients risk assessed for VTE increased significantly from 0% at baseline to 35% at follow-up ($p<0.001$). A manuscript is in preparation for submission to a peer reviewed journal.



Sally Sutherland-Fraser

Clinical Nurse Consultant
Perioperative Practice Development
SESIAHS

My research interest was triggered by the experience of a young patient who developed pressure ulcers following lengthy surgery. I wondered 'how current is our knowledge of pressure ulcer risks?' and 'how effective is the preventative care in theatres?' These questions led me to the literature and the first of my many dilemmas as a budding researcher – what to do with all that literature?

Professor Middleton and the team in the Nursing Research Institute have not only provided me with answers to questions such as this, but they also provide research expertise, supervision and encouragement. It's great to have the NRI within the hospital environment and an it's opportunity for more nurses to develop their research ideas.

Pressure Ulcer Preventative Program in Perioperative Care: Evaluation of a Nursing Education Intervention

Sutherland-Fraser S¹, Elmes T², Burke V³, McInnes L⁴, Maher L⁵, Middleton S⁶

¹ Clinical Nurse Consultant, Perioperative Practice Development, SESIAHS, ² Clinical Educator Nolan Operating Suite, The Mater Hospital, ³ Nurse Manager, The Nolan Operating Suite/DSU/Endoscopy/CSSD The Mater Hospital, ⁴ Senior Research Fellow, SV&MHS ACU Nursing Research Institute, ⁵ Research Assistant SV&MHS ACU Nursing Research Institute, ⁶ Professor of Nursing Research and Director SV&MHS ACU Nursing Research Institute.

Research Design: Retrospective chart audit; Before and after survey

Date Started and Completed: 2008 – present

Funding: NSW Nursing and Midwifery Innovation Scholarship (\$9,997), Friends of the Mater Foundation (\$15,992). Total funding received: \$25,989

Aims

- To improve: a) perioperative nurses' knowledge of pressure ulcer (PU) risks and reduction strategies; b) compliance with documentation of risk assessments and use of PU interventions; c) wider use of perioperative PU interventions

Method

150 Nurses from two hospitals were invited to participate in a self-administered survey to examine knowledge of pressure ulcer risks and prevention strategies before and one month after the PuPP education intervention. Focus groups were held to obtain key informants' views on priority areas arising from analysis of the baseline survey to be addressed in the educational intervention. Retrospective medical record audits will be conducted to determine nurses' compliance with documentation of PU risk assessments and use of interventions.

Results/ Study Progress

Ninety baseline surveys were returned, giving a response rate of 60%. Results indicated that: at handover, 20% of respondents were 'highly likely' to report the patient's skin condition, while 11.6% were 'highly likely' to report the patient's PU risk assessment score. Further analyses are underway. The second survey currently is being administered.

Conference Presentations

Sutherland-Fraser S. Learning to take the pressure down. NSW Health, Nursing & Midwifery Office Innovations Showcase, Sydney. December 2008.

Sutherland-Fraser S. Facing Facts: Perioperative nurses knowledge of pressure ulcers. Paper presented at the NSW Operating Theatre Association Annual Conference, Sydney, April 2009.



Melissa Brunner

Senior Speech Pathologist
Acute Stroke Care Unit
St Vincent's Hospital

...it all started at a conference over morning tea... Buzzing with ideas at the Smart Strokes conference in 2008 we started talking and brainstorming. We noticed that there had been several studies looking into a circuit class style of therapy. Most of the studies had been done in the context of rehabilitation and predominantly within the realms of physiotherapy and motor deficits. We were keen to look at whether it was feasible to do this style of service provision within the acute stroke unit as a multidisciplinary team. We also wanted to see whether this had an effect on patient outcomes and satisfaction, as well as investigating team satisfaction with the change in service provision.

We're thrilled that we've been successful in receiving a grant from St Vincent's Clinic Foundation and it's an exciting challenge for a team predominantly made up of part time staff (with busy caseloads!) to be able to dedicate time for clinical research. It's also a great opportunity to work with the Nursing Research Institute in order to gain clinical research skills and experience, as well as to strengthen partnerships with the aim of continuing further multidisciplinary health services research down the track.

Coordinated Multidisciplinary Circuit Therapy Class: An Evaluation

Brunner M¹, Markus R², McInnes E³, English C⁴, Trudinger C⁵, Van Vliet P⁶, Middleton S⁷

¹ Stroke Care Unit Senior Speech Pathologist, St Vincent's Hospital, ² Director, Stroke Care Unit St Vincent's Hospital, ³ Senior Research Fellow, SV&MHS ACU Nursing Research Institute, ⁴ Lecturer, School of Health Sciences Physiotherapy, University of South Australia and Research Fellow, National Stroke Research Institute, Melbourne, ⁵ Nurse Unit Manager, Xavier 7 North, St Vincent's Hospital, ⁶ Stroke Care Unit Senior Physiotherapist ⁷ Professor of Nursing Research and Director SV&MHS ACU Nursing Research Institute.

Research Design: Before and after prospective study

Project Duration: to commence January 2010

Funding: \$25,000 from St Vincent's Clinic Foundation Grant (2010)

Aim

- To determine the feasibility of conducting multidisciplinary therapy in a group circuit class on the acute stroke care unit.

Method

The study will take place on the Stroke Unit at St Vincent's Hospital. The study will compare process and outcome measures for acute stroke patients receiving standard multidisciplinary therapy with those who receive multidisciplinary therapy in a multidisciplinary circuit class. It also will examine patient and team satisfaction with this style of service delivery. A sample of consecutive patients admitted to the six bed acute stroke unit at St Vincent's Hospital over a six month period will be recruited. The primary outcome measures are overall (mean) treatment time; patient satisfaction; and team satisfaction. We will collect baseline pre-intervention data for 3 months, followed by implementation of the multidisciplinary circuit class which will run for 3 months. At this time follow-up data will be collected.

Results/ Study Progress

Ethics application under preparation.



Peta Drury

PhD Candidate
Lecturer, School of Nursing NSW & ACT
ACU National

I was invited by Professor Sandy Middleton, in 2006, to conduct a process analysis alongside the QASC cluster randomised controlled trial and at the same time undertake a PhD. Through the support of Professor Middleton I was awarded a secondment to the National Centre for Clinical Outcomes Research, Nursing & Midwifery, Australia (NaCCOR) and my project has been awarded more than \$50,000.00 in research grants.

Evaluating Nurse Behaviour Change in NSW Acute Stroke Units Following Implementation of an Intervention to Promote the Uptake of Evidence Based Practice

Drury P¹, Middleton S², Hardy J³, & McInnes L⁴

¹ Lecturer, PhD Candidate, ACU National, ² Professor of Nursing Research and Director SV&MHS ACU Nursing Research Institute, ³ Senior Lecturer, University of Sydney, ⁴ Senior Research Fellow, SV&MHS ACU Nursing Research Institute

Research Design: Mixed Methods

Project Duration: 2006 - Present

Funding: Australian Diabetes Society (ADS) (\$20,068), The College Consortium Fund (\$30,009). Total funding received: \$50,077.

Aims

Study 1: Barriers to & enablers of EBP

- To identify barriers and enablers towards evidence-based practice (EBP) of Nurse Unit Managers (NUMs) of stroke units in NSW participating in the QASC trial, including self-reported leadership ability, knowledge, attitudes and beliefs about evidence-based practice; perception of the organisation/ Stroke Unit as a learning environment; perceptions of the organisations/ Stroke Units readiness to accept change.

Study 2: Theory-based Process Analysis

- To conduct a theory-based process evaluation alongside the Quality in Acute Stroke Care (QASC) cluster randomised controlled trial to measure intentional and actual nurse behaviour change following the QASC trial.

Method

Study 1: Barriers to & enablers of EBP

NUMs of stroke units in NSW (n=19) were invited to participate in the study. Each NUM was required to complete a survey and participate in a face-to-face interview which was digitally recorded.

Study 2: Theory-based Process Analysis

Surveys, based upon the Theory of Planned Behaviour, will be distributed to nurses employed in the 19 NSW stroke units participating in the QASC trial to measure intentional behaviour. To evaluate the effectiveness of the FeSS intervention on actual behaviour, medical record audits will be undertaken for all consenting patients participating in the QASC study.

Results/ Study Progress

Study 1: Barriers to & enablers of EBP

Nineteen surveys were returned (response rate of 100%) and all NUMs participated in the face-to-face interviews. Data analysis currently is underway.

Study 2: Theory-based Process Analysis

The questionnaire has been piloted and refinements are in progress.



Rose McMaster

PhD Candidate
Senior Lecturer and Assistant Head
School of Nursing NSW & ACT
ACU National

I have recently been involved in the evaluation of housing support programs for people at risk of homelessness. This has given me an opportunity to work collaboratively with a community engagement perspective and has led to future investigations for my PhD.

Evaluation of a Housing Support Program (HSP) for People Who Are at Risk of Homelessness

McMaster R¹, Hawley R², Fletcher T³, & Middleton S⁴

¹ PhD Candidate, Assistant Head of School, School of Nursing NSW & ACT, ² Assistant Head of School, School of Nursing NSW & ACT, ³ Research Assistant SV&MHS ACU Nursing Research Institute, ⁴ Professor of Nursing Research and Director SV&MHS ACU Nursing Research Institute.

Research Design: In-depth interviews; focus groups; and survey

Project Duration: August 2008 – present

Funding: \$38,000 from Catholic Healthcare

Aim

- To evaluate the Housing Support Program (HSP) from the perspective of the clients, coordinators and the people who referred clients to the HSP

Method

This study had three phases. Phase 1 and 2 used in-depth face-to-face interviews to explore the experiences of the HSP clients and coordinators. Phase 3 used a survey and focus group to explore the experiences of the people who referred clients to the HSP.

Results/ Study Progress

All the HSP clients and coordinators reported that the program assisted clients who were vulnerable to homelessness maintain secure accommodation. Forty six surveys were returned from people who referred clients to the program (response rate of 78%). The people who referred clients to the program reported that the program was a unique and much needed service, observing an improvement in secure accommodation for those who were at risk of homelessness through loss of tenancy. Attendees at the focus groups reported that the long term holistic and flexible nature of the HSP assisted vulnerable clients to maintain secure accommodation. A manuscript is in preparation for submission to a peer reviewed journal.

Report

McMaster R, Hawley R, Fletcher T, Middleton S. *Evaluation of the Housing Support Program at Catholic Healthcare.* Report to Catholic Healthcare. May 2009. P 1-40.



Jane Allnutt

PhD Candidate
Lecturer,
School of Nursing NSW & ACT
ACU National

I became involved in researching Nurse Practitioner services soon after I came to Australian Catholic University in 2005. A research team from ACU (Professor Sandy Middleton, Rose McMaster, Sharon Hillege and myself) received internal and external funding to investigate the clients perceptions of the role of the Nurse Practitioner. I enjoyed the experience and found the research very rewarding so I was encouraged in 2008 to venture into a PhD at ACU titled 'Exploring the Nurse Practitioner Service in NSW'

Exploring the Nurse Practitioner (NP) Service in New South Wales

Allnutt J ¹, Hawley R ², Gardner G ³, Gardner A ⁴, Della P ⁵, Middleton S ⁶

¹ PhD Student and Lecturer ACU School of Nursing NSW & ACT, ² Senior Lecturer and Assistant Head of School, ACU School of Nursing NSW & ACT., ³ Director, Centre for Clinical Nursing Royal Brisbane & Women's Hospital and Queensland University of Technology, ⁴ Professor of Nursing, Tropical Health, James Cook University, ⁵ Professor of Nursing, Head of School, Curtin University, ⁶ Professor of Nursing Research, and Director SV&MHS ACU Nursing Research Institute.

Research Design: Mixed methods: case study and retrospective medical record audit

Project Duration: Feb 2008 – Present

Funding/Leave:

- 2009 – Semester 1 - NaCCOR Secondment – used for 0.5 teaching release. Value: \$7,500
- 2010 – Semester 2 – Outside Studies Program – used for teaching release for 6 months. Value: \$9,474

Aim

- To investigate the role of the Nurse Practitioner (NP) Service in New South Wales (NSW).

Method

The 'case' under investigation is the NP Service in NSW focusing on the uniqueness of the NP Service. The multiple sources of information used were: NP observation; face-to-face interviews with i)NPs, ii)associated health professionals and iii)patients; and retrospective medical audit for patients that were seen by the NP.

Data Analysis

Quantitative data collected from participant observation and data abstraction will be entered into SPSS Version 15 and analysed using descriptive statistics. Frequencies for all variables will be determined. Qualitative data from participant observation and face to face interviews will be analysed using a thematic approach. This approach will identify common words, phrases and sentences. These will then be clustered into sub themes and then themes. Within the themes common patterns of experiences will be identified.

Results/ Study Progress

Data collection has been completed and data analysis is in progress.



Simeon Dale

Clinical Project Coordinator
Quality in acute stroke care project

I am currently coordinating the Quality in Acute Stroke (QASC) Project. I have over 20 years experience in critical care, specialising in neuroscience and have worked with Professor Middleton since 2005. Previously, I have managed the Royal North Shore Hospital's participation in a number of large research projects. As the QASC project co-ordinator, I am responsible for the day-to-day running of this project across 19 NSW acute stroke units. This has included the supervision of up to 15 clinical research assistants who are recruiting patients for the study. One of the challenges & opportunities for me in the latter phases of the study has been to develop my writing skills and to be involved in the writing up of this study for publication.

Cluster Randomised Controlled Trial of a Multidisciplinary, Team Building Intervention to Manage Fever, Sugar & Swallowing in Acute Stroke: The Quality in Acute Stroke Care (QASC) Project

Middleton S¹, Levi C², Dale S³, Griffiths R⁴, Grimshaw J⁵, & Ward J⁶

¹ Professor of Nursing Research and Director SV&MHS ACU NRI, ² Director, Priority Research Center for Brain & Mental Health, John Hunter Hospital, ³ Clinical Project Co-ordinator SV&MHS ACU NRI, ⁴ Professor & Head of School of Nursing & Midwifery UWS, ⁵ Canada Research Chair in Health Knowledge, Transfer and Uptake Director, Clinical Epidemiology Program Ottawa Health Research Institute, ⁶ Adjunct Professor, Department of Epidemiology & Community Medicine, University of Ottawa.

Research Design: Cluster randomised controlled trial

Project Duration: 2005 – present

Funding: NHRMC Project Grant \$398,550; St Vincent's Clinic Foundation \$50,000. Total funding received: \$448,550.

Aim

- To evaluate a standardised, multidisciplinary team building intervention (Fever, Sugar, Swallowing (FeSS) Intervention) for the management of fever, hyperglycaemia and swallowing dysfunction following acute stroke.

Hypothesis

At 90-days post-hospital admission, patients treated in acute stroke units (ASUs) allocated to receive the FeSS Intervention will have: i) lower death and disability (Modified Rankin Score ≥ 2); ii) lower mean dependency score (Barthel Index); iii) higher health status (SF-36) when compared with patients treated in ASUs that do not receive this intervention.

Method

NSW Category A and B ASUs have been randomised to the intervention or control group. Intervention ASUs received the FeSS Intervention comprised of an evidence-based treatment pathway (FeSS Pathway) for the management of fever, hyperglycaemia and swallowing dysfunction in the first 72 hours following admission to an ASU; treatment protocols; and a multi-disciplinary team building intervention. Control group hospitals received an abridged version of the Acute Stroke Management Guidelines for fever, hyperglycaemia and swallowing dysfunction.

Results/ Study Progress

Nineteen ASUs are participating (including SVH) (95% participation rate). Baseline data have been collected at all sites (n=723 patients). The intervention has been implemented. Recruitment of patients to the follow up cohort is ongoing.

Peer Reviewed Publications

Middleton S, Levi C, and **Dale S**. Arrival time to stroke unit as crucial a measure as arrival time to emergency department. *Stroke* 2008; 39; 1:5.

Middleton S, Levi C, Ward J, Grimshaw J, Griffiths R, D'Este C, **Dale S**, et al. Fever, hyperglycaemia and swallowing dysfunction management in acute stroke: A cluster randomised controlled trial of knowledge transfer. *Implementation Science* 2009. 4: 16.

Conference Presentations: Seven to date.



Lynette Chakarian

Australian Nurse Practitioner Project
(AUSPRAC)
Project Officer

As a novice researcher I was pleased to be given the opportunity to work closely with Professor Sandy Middleton on a number of projects, including AUSPRAC, a national study investigating the emergent role of the Nurse Practitioner in Australian healthcare. In this position I have learnt valuable skills in survey administration, database management and project coordination. The Nursing Research Institute has provided a supportive environment in which I have been able to develop my skills and understanding of the research process.

The Status of Australian Nurse Practitioners: The Second National Census

Middleton S¹, Gardner G², Gardner A³, & Della P⁴

¹ Professor of Nursing Research and Director, SV&MHS ACU Nursing Research Institute, ² Director, Centre for Clinical Nursing Royal Brisbane & Women's Hospital and Queensland University of Technology, ³ Professor of Nursing, Tropical Health, James Cook University ⁴ Professor of Nursing, Head of School, Curtin University

Research Design: Census

Project Duration: 2009 – Present

Funding: Australian Research Council Linkage grant. 2006: \$37,500, 2007: \$225,000; 2008: \$250,000; 2009: \$62,500. Total ARC funding received: \$575,000.

Aim

- To undertake a national census of Australian nurse practitioners to determine the profile of Nurse Practitioner (NP) service in Australia and compare these results to those obtained in an earlier census undertaken in the first phase of AUSPRAC in September 2007

Method

All Nurse Practitioners who were authorised to practice in Australia in April 2009 were sent a 14 page self administered survey comprising five sections: demographics; authorisation process; professional development; employment profile and clinical service patterns.

Results/ Study Progress

The data currently are being analysed, including a comparative analysis with the data obtained in the first phase of AUSPRAC. These results will be presented in a manuscript for submission to a peer reviewed journal.



Dr Elizabeth McInnes

Senior Research Fellow,
SV&MHS ACU
Nursing Research Institute

Early in 2009, I was appointed as the inaugural Senior Research Fellow at the Nursing Research Institute. The GMCT Scoping Study is my first grant whilst in this position and I look forward to the opportunity the NRI will provide me with to further my career in research.

GMCT Scoping Study: What Makes Successful Clinical Networks?

Middleton S¹, **McInnes E**², Gardner G³, Haines M⁴, Haertsch M⁵, Paul C⁶, Castaldi P⁷

¹ Professor of Nursing Research and Director, SV&MHS ACU Nursing Research Institute, ² Senior Research Fellow, SV&MHS ACU Nursing Research Institute, ³ Director, Centre for Clinical Nursing Royal Brisbane & Women's Hospital and Queensland University of Technology, ⁴ Director, Health Services Research Sax Institute, ⁵ GMCT Research Fellow Sax Institute, ⁶ Faculty of Health, School of Medicine & Public Health, University of Newcastle, ⁷ Emeritus Professor, University of Sydney

Research Design: Qualitative interviews

Project Duration: 2009 – Present

Funding: \$30,000 Sax Institute

Aim

- To identify indicators of successful clinical networks and determine the necessary conditions and factors which help to achieve successful outcomes for networks.

Method

Twenty-five participants were selected from four stakeholder groups, namely, network drivers; network participants; senior health service managers and senior policy makers. Participants were asked about determinants of successful clinical networks. Responses will be transcribed verbatim and will be used to produce narrative text which will be aggregated using ATLAS.ti[®] software. This process will enable a summary of the textual data and support identification of common, recurring and unique themes thus capturing a range of views using participants' descriptors and language on what they consider to be important indicators or outcomes of success and on conditions for successful outcomes to occur.

Results/ Study Progress

Data collection is currently still underway. Results will be used to inform further research funded by a successful 2010 NHMRC Partnership Grant (Haines M, Redmond S, Castaldi P, et al. Determinants of Effective Clinical Networks).

NRI NURSING RESEARCH INSTITUTE

SV&MHS ACU Nursing Research Institute
Level 5, de Lacy Building
St Vincent's Hospital
Victoria Street
Darlinghurst NSW 2010
Phone: (02) 8382 3790
Fax: (02) 8382 3792
naccor.admin@acu.edu.au



St Vincents
& Mater Health
Sydney



ACU National
Australian Catholic University
Brisbane Sydney Canberra Ballarat Melbourne

NaCCOR
National Centre for Clinical Outcomes Research
Nursing & Midwifery, Australia
University Priority Research Centre