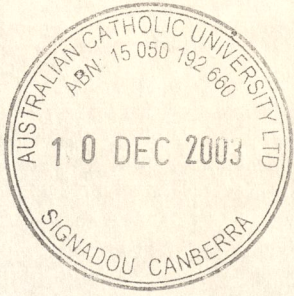


Annual Report 2002

H
378.
94
AUS

Contents

Mission	1
Highlights of 2002	2
Chancellor's Report	4
Vice-Chancellor's Report	6
Pro-Vice-Chancellor's Report – Academic Affairs	8
Pro-Vice-Chancellor's Report – Quality and Outreach	11
Pro-Vice-Chancellor's Report – Research and International	14
Faculty Report – Arts and Sciences	16
Faculty Report – Health Sciences	17
Faculty Report – Education	18
Dean of Students Report	20
Finance Summary 2002	21
Members of the Senate	22
Principal Officers of the University	22
Awards	24
Overseas Study Agreements	24
Memoranda of Understanding and Agreements	25
Company Structure	26
Management Structure	26
Faculties and Schools	26
Community outreach	27
Research Flagships and Centres	28
Research Funding 2002	30
ACU National at a Glance	34
ACU National Foundation	37



Australian Catholic University shares with universities worldwide a commitment to quality in teaching, research and service. It aspires to be a community characterised by free enquiry and academic integrity. The University's inspiration, located within 2000 years of Catholic intellectual tradition, summons it to attend to all that is of concern to human beings. It brings a distinctive spiritual perspective to the common tasks of higher education.

> Mission

Through fostering and advancing knowledge in education, health, commerce, the humanities, the sciences and technologies, and the creative arts, Australian Catholic University seeks to make a specific contribution to its local, national and international communities. The University explicitly engages the social, ethical and religious dimensions of the questions it faces in teaching, research and service. In its endeavours, it is guided by a fundamental concern for justice and equity, and for the dignity of all human beings.

Australian Catholic University has a primary responsibility to provide excellent higher education for its entire diversified and dispersed student body. Its ideal graduates will be highly competent in their chosen fields, ethical in their behaviour, with a developed critical habit of mind, an appreciation of the sacred in life and a commitment to serving the common good.

>> Artworks donation

A collection of bronze sculptures, *Mysterium Crucis*, was donated to the University by international sculptor, poet and painter, April Glaser-Hinder. The collection is a series of 93 bronze sculptures based on the forms of the cross, hammer, nail and staff, exemplifying basic Christian symbols of suffering and hope.

The exhibition was officially opened at the Strathfield Campus (Mount Saint Mary) on 28 November. After the exhibition, the majority of the sculptures were moved to the Brisbane Campus to be permanently displayed and several other works are on display at the Melbourne and Strathfield campuses.

>> Boardroom opening

ACU National honoured the late Sir Bernard Callinan with the naming of the Melbourne Campus (St Patrick's) boardroom. The Callinan Boardroom was officially opened by the Most Reverend Frank Little DD KBE, Archbishop Emeritus of Melbourne on 29 October. Sir Bernard played a major role in the formation of the University and was the first Chairman of the Victorian Chapter of ACU National and a founding member of the company, Australian Catholic University Limited. Sir Bernard was the first recipient of an Honorary Doctorate, which was bestowed upon him on the occasion of the inauguration ceremony of Australian Catholic University in April 1992.

>> Linocut exhibition

An exhibition of limited edition linocut prints, *Zugu Bau Thi Thui – Seven Stars*, from the artists of the Mualgau Minaral Artist Collective on Mua Island, Torres Strait, was on display at the Melbourne Campus (St Patrick's) Gallery in association with the Alcaston Gallery from 25 October to 8 November.

2002 HIGHLIGHTS

> Highlights 2002

>> Public forum on popular futures

Professor Peter McDonald, The Australian National University (ANU) and Professor Graeme Hugo (The University of Adelaide), presented a public forum on Australia's population futures at the North Sydney Campus on 2 October. In addressing the forum theme, *Exploring the Connection between Population, Immigration Policy and Ageing*, the presenters evaluated the profile for Australia's population over the next 50 years.

>> Eureka prize in ethics

A research report on the ethics of mutual obligation won the inaugural ACU National Eureka Prize for Research in Ethics. The report, *The Ethics and Politics of Mutual Obligation*, by Dr Jeremy Moss from the Centre for Applied Philosophy and Public Ethics at The University of Melbourne, examines the ethical aspect of the obligations placed upon the unemployed in return for welfare benefits. Dr Moss received the award at the 12th annual Australian Museum Eureka Prize dinner held in Sydney on 13 August.

>> Vienna boys perform at the university

The 'Mozart' Choir from the Vienna Boys Choir toured Australia in August and included the Melbourne Campus (St Patrick's) on their itinerary. The Choir entertained University staff and guests in the ACU National Central Hall. Special guests included members of the 1939 Vienna Boys Choir, Kurt Schuster, Ernst Koller, Mr Radda and Mr Hauser, who had performed for the Melbourne community in 1939.



>> Stars at Strathfield

An all-star cast comprised of Sydney Swans players Ricky O'Loughlin and Adam Goodes, and Deborah Mailman, of the Australian drama television series, *The Secret Life of Us*, visited the Strathfield Campus on 30 July to join students and staff celebrate ACU National Indigenous Week. Celebrations were held on the University's campuses, with activities including Indigenous music and dance displays, bush food luncheons and the opening of an Indigenous art exhibition on the Strathfield Campus.

>> Plaque unveiled

A plaque commemorating the foundation of Australia's newest university campus was unveiled at the University's new Brisbane Campus site on 10 July. The function was attended by special guests including Queensland Education Minister Anna Bligh, Queensland Minister for Employment, Training and Youth, and Minister for the Arts, Matt Foley, Archbishop of Brisbane, the Most Reverend John Bathersby, and the Federal Member for Petrie, Teresa Gambaro, representing the Federal Minister for Education, Science and Training, the Honourable Dr Brendan Nelson. Students commenced at the new campus in 2003. The new campus is located at the site of the former Pius XII Seminary site at Banyo, on Brisbane's northside.

>> Couch lecture

Professor Joseph Komonchak addressed subsidiarity in the church and how it is interpreted in Catholic social teaching at the 2002 Victor J Couch Lecture held at the North Sydney Campus (MacKillop) on 9 July.

Professor Komonchak, a priest from the Archdiocese of New York and holder of the John and Gertrude Hubbard Chair in Religious Studies at the Catholic University of America, has published widely and is editor of the *New Dictionary of Theology*.

>> Aquinas memorial lecture

American lecturer, Professor Peter Phan, President of the Catholic Theological Society of America, delivered the 2002 Aquinas Memorial Lecture at the Brisbane Campus on 28 June. Professor Phan also presented a course on Political and Liberation Theologies and on Mission for the Twenty-first Century at the Brisbane Campus from 24 to 28 June.

>> Refugees and human rights forum

Mary Ann Glendon, Learned Hand Professor of Law, Harvard Law School and Julian Burnside QC, who represented the asylum seekers from the Tampa for the Victorian Council for Civil Liberties, spoke at a public forum on Refugees and Human Rights held on the Melbourne Campus (St Patrick's) on 31 May.

>> Sculpture unveiled

Chairman of the Grollo group of companies, Bruno Grollo AO, unveiled a sculpture of the Madonna and Child by Australian artist, Peter Schipperheyn, in the chapel of the Melbourne Campus (St Patrick's) chapel on 28 May.

>> Blake prize

The Vice-Chancellor, Professor Peter Sheehan, presented Hilton McCormick with a cheque for \$10,000 for his winning entry, *The Harvest*, in the 2002 Blake Prize for Religious Art, which was announced at the Casula Powerhouse Arts Centre on 5 December.

The Touring Blake for Religious Art, a collection of works from the 2001 Blake Prize, was on display at the ACU National Galleries at the Strathfield and Melbourne campuses in May and October.

>> Lenten lecture

Father Tom Doyle AO, Director of Catholic Education for the Archdiocese of Melbourne, delivered the 2002 Lenten Lecture, *Catholic Education – An Exciting Journey*, at the Melbourne Campus (St Patrick's) on 13 February. ACU National introduced the annual Lenten Lecture in 1999. Each year the Lenten Lecture addresses the theme of theology in relation to Australian culture.

>> Indigenous bursaries

A trust to fund bursaries for Indigenous students undertaking postgraduate studies at the Brisbane Campus was launched in Brisbane on 22 March. The Wexford Senate Bursary Trust was launched by the Wexford Senate, which represents the 70 million Irish born and those of Irish descent worldwide.

>> Awards ceremony

The 2002 Sydney Awards and scholarships ceremony was held on the Strathfield Campus (Mount Saint Mary) on 21 May. Forty students from the Sydney campuses received awards at the function, which was attended by more than 200 guests, including ACU National staff, prize sponsors, prize recipients and their families and friends.

>> Leadership conference

The Flagship of Catholic Educational Leadership presented an international conference, which focused on issues and challenges facing Catholic educational leadership on the Strathfield Campus (Mount Saint Mary) in August.

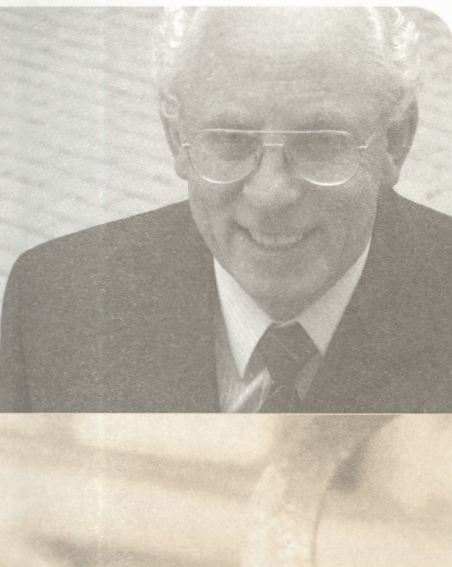
>> Aquinas lecture

Sr Patricia Pak Poy RSM AM presented the Annual Aquinas Lecture, *The campaign to ban landmines – a transforming civil action?*, on the Ballarat Campus (Aquinas) on 26 September. Sr Pak Poy is the National Coordinator of the Australian Network of the International Campaign to Ban Landmines.

>> Social justice conference

Schools as Just Places was the title of a conference held at the Strathfield Campus (Mount Saint Mary) in July. The conference, which was attended by more than 200 delegates, explored current research in models of justice in schools, best practices in pastoral care and discipline, educating for social justice, schools and the law and meeting school challenges in a just way.

There are many things that being a university is about. One of the roles of a university, however, is to provide a rigorous and disciplined academic environment in which students can articulate and explore contemporary questions, be they questions relating to spirituality or religion, science and technology, or questions emerging from the society and culture in which the university is situated.



> Chancellor's Report

51

A related challenge for the university is to engage with society in exploration and debate of the issues and events that seem likely to have significant and lasting impact on the values and lives of its citizens. By encouraging faculty, students and the wider community to live the questions now, the university will, as the poet Rilke observes, assist them to grow, eventually, into the answers.

Yet another challenge for a university is to stimulate the members of its community to reach out beyond themselves in service that will enhance the quality of life of those less fortunate than themselves and to research the factors that are conspiring to further marginalise those who are already economically, socially and politically disadvantaged in our society. This will inevitably lead to a critical examination of popular beliefs and dominant cultures as difficult questions are asked. It is often useful to view life issues from the standpoint of the minority, the victim, the outcast and the stranger.

The Mission of Australian Catholic University situates it ideally to take practical steps to address all these challenges:

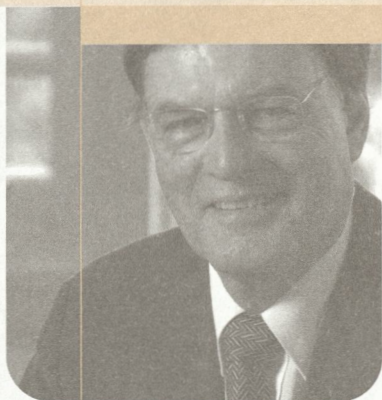
Through fostering and advancing knowledge in education, health, commerce, the humanities, the sciences and technologies, and the creative arts, Australian Catholic University seeks to make a specific contribution to its local, national and international communities. The University explicitly engages the social, ethical and religious dimensions of the questions it faces in teaching and research, and service. In its endeavours, it is guided by a fundamental concern for justice and equity, and for the dignity of all human beings.

In its Audit Report publicly released in late December 2002, the Australian Universities Quality Agency recognised the distinctive Mission of Australian Catholic University, and affirmed its potential to make a distinctive contribution both within the Australian context of higher education and internationally. It commended the University for substantially achieving its distinctive Mission, and the University Senate for its strategic vision and the processes the University has adopted in developing and articulating its vision.

Such vision has encouraged Australian Catholic University to collaborate with the Sisters of Mercy in the delivery of a non-income generating International Graduate Certificate of Education program in Karachi. It has also led the University to take a monitoring and supportive role in the establishment of a Faculty of Education in a Catholic University in East Timor.

While universities should never be self-congratulatory, it is encouraging to note that faithful adherence to its Mission will ensure that Australian Catholic University will continue to make a very distinctive contribution towards enhancing the lives of those who come to share in our ideals.

Br R Julian McDonald CFC



2002 was another significant year for Australian Catholic University (ACU National). Work was completed on the new Brisbane Campus (McAuley at Banyo), the review of the University's operations by the Australian Universities Quality Agency took place, a number of important institutional reviews were undertaken and the University participated actively in the Crossroads Review. All this while never losing sight of the principal focus of ACU National: to provide excellent higher education for its entire diversified and dispersed student body which this institution is uniquely placed to do as a public Catholic university.

The following highlights some of the significant activities for the period under report.

Brisbane Campus

An important occasion was the opening of the University's new Brisbane Campus, (McAuley at Banyo), which took place on 11 March 2003. The Hon Peter Beattie, Premier of Queensland, officially opened the campus and the Queensland Senator Brett Mason represented the Federal Minister for Education, the Hon Brendan Nelson. An important element of the formal ceremony was the blessing of the campus by the Most Reverend J.A. Bathersby, Archbishop of Brisbane.

The 'Banyo' project involved the renovation and refurbishment of the former seminary buildings and the construction of state-of-the-art teaching, research and administration facilities. This was a major undertaking for ACU National which has provided the institution with a campus of which we can all be proud. The development reinforces the commitment which the University has to ensuring that all its students have an excellent educational experience. It will also enable the University to meet the growing demand for tertiary education places in Queensland.

The Federal and State governments and the Queensland Bishops all provided support for this important project.

The University was delighted to host a visit by Her Excellency Mary McAleese, President of Ireland, to the new Brisbane campus on 12 March 2003. The visit was a great success and was very well received by staff, students and guests.

Australian Universities Quality Agency (AUQA)

The visit to the University by the AUQA external audit panel took place over three days in September 2002. The panel met with the Chancellor and a small group of Senators; the Vice-Chancellor; approximately 100 staff from across the University; groups of students and a cross-section of external professional and community representatives. The formal report of the audit was released in January 2003 and commented very positively on the University.

The AUQA audit and its subsequent report were very important for the University. Two important 'commendations' contained in the report related to the University substantially achieving its distinctive Mission goal: Senate has been commended for its strategic vision for the University and its clear definition of its own role in developing that vision.

The points raised in the report are now being considered carefully and are issues for discussion in relevant forums throughout the University.

The AUQA exercise was a very intensive and important exercise for the University and I am extremely proud of our staff and students for the commitment, dedication and maturity they demonstrated so well throughout the AUQA visit. I wish also to record my appreciation to Professor Muredach Dynan, Pro-Vice-Chancellor (Quality and Outreach) and Mr Richard Clifford, Manager - Quality for the tremendous work they did in preparing the institution for the AUQA audit.

Their professional approach ensured that the University was well placed to respond to all aspects of the audit process.

Strategic Review

A major task currently being undertaken by the Strategic Review Committee is the review and revision of the Strategic Plan 1999-2008. The revision of the Plan will aim to reflect the findings of the AUQA audit, and update the current document. The revised Plan will ensure that the development of the University continues to be fostered within a strategically-directed framework.

Evaluative Reviews

The University continued its comprehensive program of review during the year. The program has contributed enormously to the development of the institution. During 2002, reviews were conducted of Student Services, Ministry and Access and Equity; and International Education.

Deputy Deans were assigned in each faculty, for a period of three years, following the external reviews of the three faculties undertaken in 2001. The Deputy Deans are responsible to the Dean and assist the Dean in providing academic leadership and operational management for the faculty, and in realising the University's strategic intent.

Research is an integral part of the University's activities. An evaluation of the Office of Research was conducted in late 2002 and a review of the wider Research portfolio was conducted in April 2003. The report of the Research Review will be very important to the future direction of research at ACU National.

A review of the Sub-Faculty of Philosophy and Theology is in process. Planning is underway for reviews of the Library service, and of the regional identity of the Ballarat and Canberra campuses.

Higher Education Review

The University has been a very active participant in the current debate on higher education and has made many submissions to the Federal Government in response to the Ministerial Discussion Paper Higher Education at the Crossroads and its related issues papers. In its response, ACU National asserted the value of the Social Sciences and the Humanities to Australia's future.

The Federal Government's package of reform resulting from the Review will be important for the higher education sector and ACU National is positioning itself to respond strategically when the full implications are known.

Students

The University continues to attract high levels of interest in its courses with 11,864 students enrolled for 2003. In addition 2,874 fee-paying students are currently enrolled.

Some 2,800 students graduated from ceremonies held in April and May 2003 in Brisbane, Sydney, Canberra, Melbourne and Ballarat. Eight Doctoral awards were conferred – four Doctor of Philosophy degrees (3 in Melbourne and 1 in Sydney), and four Doctor of Education degrees (2 each in Sydney and Melbourne).

Faculty Medals were awarded in the Faculty of Education in the Pass degree, in the Faculty of Arts and Sciences in the Pass and Honours degrees, and in the Faculty of Health Sciences in the Pass degrees.

Honorary Degrees

Honorary Doctorates were awarded to Mr Geoffrey Joy at the Canberra graduation ceremony on 4 April 2003; Sr Patricia Pak Poy, RSM AM at the Ballarat graduation ceremony on 3 May; Sr Marie Kehoe, RSM AM and Professor Ivan Deveson, AO at the Melbourne graduation ceremonies on 9 May; and to Professor Emeritus Peter Drake, AM at the Sydney graduation ceremony on 23 May.

Honorary Titles

Senate awarded the honorary title of Honorary Fellow to Ms Jo Gaha for a three-year period. Ms Gaha is working closely with the School of Social Work in Canberra. The title of Visiting Fellow was renewed for Br Mark Paul, FMS for a further two years to facilitate his work in the development of education in East Timor.

Senate has extended the appointment of three Adjunct Professors for further three year terms: Dr Norman Ford, SDB, Professor Emeritus Maev O'Collins, and Dr Ron Toomey.

Awards

In 2002 the University established an award for Excellence in Post-Graduate Research Supervision to provide recognition for excellence in the fostering and challenging of the University's research students by a member of staff. The inaugural award was presented at the Brisbane graduation ceremony on 9 April 2003 to Associate Professor Denis McLaughlin.

This new award joins the existing Excellence in Teaching awards and Outstanding Community Engagement award in recognising the contribution of staff to the development of strategic elements of the University's activities.

In Recognition

On 27 November, the Archbishop of Sydney, His Grace Archbishop Pell, presented Mr Gerry Gleeson, AC, Senator and Member of the Company, with the insignia of the award of Knight Commander con placca of the Order of St Gregory the Great. His Holiness Pope John Paul II has honoured Mr Gleeson with the award in recognition of the many years of distinguished service he has given to the Church and, in particular, Catholic education.

Links with Other Institutions

ACU National has become aligned with a network of 'New Generation Universities' (NGU) which hopes to drive innovative education globally. The network provides a mechanism for NGU to share experiences, plan strategies for the future and liaise with government on particular issues relevant to NGU.

Prizes and Awards

The University was most successful in the Australian Chamber of Commerce and Industry (ACCI) National Work and Family Awards announced on 4 September 2002. ACU National received a Joint Award (with the Australian Film Commission) in the single Innovative Initiative Category 'for outstanding research in the development, evaluation and the implementation of its paid maternity leave policy to accommodate the needs of staff and in building an inclusive workplace'. ACU National was highly commended in the First Steps Category 'for demonstrated commitment in the early stage of implementation of work/life policies and practices to meet the needs of its staff and enhance organisational performance'.

Significantly, the University was also judged as a finalist in the competition for an award in the Large Business Category.

Sponsorships

The University continues to be a major sponsor of two prestigious prizes that reflect and promote the distinctive ethos of Australian Catholic University: the Blake Prize for Religious Art and the Australian Catholic University Eureka Prize for Research in Ethics.

Staff Appointments

A key appointment made during the year was that of Associate Professor Tim O'Hearn to the position of Dean of Students. The appointment is for a five year term.

Negotiations for an international appointment to the position of Professor of Aged Care Nursing are close to finalisation. The proposed arrangement, involving an arrangement with an overseas institution to establish an International Centre for Aged Care, is an exciting and innovative direction for the University.

Vale

The University was especially saddened by the deaths of a number of members of its community during the period of this report. I wish to extend prayerful condolences to the families and colleagues of all staff members and students who have died during this period, including two distinguished recipients of the degree of Doctor of the University (Honoris Causa): Sr Deirdre Rofe, IBVM and Sr Gabrielle Jennings, RSM. Sr Deirdre's leadership in Catholic education in Victoria was recognised by the University at the Ballarat graduation ceremony on 20 April 2002. Sr Gabrielle had a long and valued history of involvement with the University. The University recognised her outstanding contribution to Catholic education and health care and her work in Karachi at the graduation ceremony in June 2000.

I wish to record my appreciation to all members of the University community who have contributed to the achievements of Australian Catholic University over the past twelve months. As we prepare to respond to the implications for ACU National of the Australian Federal Government's review of Higher Education I look forward to a continuation of the commitment and support so evident throughout the institution.

Professor Peter W Sheehan

This annual report records highlights of a major year for Academic Affairs and the Victorian campuses – much was undertaken within this portfolio leading to a number of significant developments. Of particular significance were the appointment of the second Rector of Ballarat Campus (Aquinas), Dr Anne Hunt, the development of the University's first Teaching and Learning Plan, the Evaluation of Academic Staff Development and preparations for and participation in the Australian Universities Quality Agency (AUQA) audit. The report allows me to express my appreciation to all those who contributed to these achievements.

> Report from Pro-Vice-Chancellor (Academic Affairs)

Academic Board

In the past twelve months Academic Board and its standing committees undertook wide-ranging activities in overseeing and enhancing the quality of the University's academic endeavours. The Board drafted revised terms of reference, which were approved by Senate on 21 November 2002; undertook a self-audit prior to participating in the AUQA audit in September 2002; approved a Code of Ethics in Teaching; through its Teaching and Learning Committee prepared the University's inaugural Teaching and Learning Plan 2003-2005; and developed an induction package for new members of the Board. Academic Board established working parties to report to the Board on accelerated progression, approval of non-award and enabling courses, and postgraduate recruitment, and invited the Academic Registrar, Ms Gay Westmore, to review course nomenclature.

During 2002 Academic Board recommended the following new courses to Senate for approval: Bachelor of Teaching/Bachelor of Arts (Computing) (Strathfield), Bachelor of Nursing/Bachelor of Arts (Melbourne), Bachelor of Theology/Bachelor of Social Science (Brisbane), Postgraduate Certificate in Early Numeracy (Victoria) and Postgraduate Certificate in Human Rights, Social Justice and Education as well as this specialisation in the Master of Education (Human Relations and Community Education) (Strathfield).

The programs, in keeping with Australian Catholic University's Strategic Plan 1999-2008, further professional education, the University's Mission and the re-packaging of existing units. Following course reviews, the Board approved the following revised programs: Bachelor of Business, Bachelor of Information Systems, Bachelor of Teaching/Bachelor of Arts (Technology), Graduate Certificate in Religious Education, Graduate Diploma in Religious Education, Graduate Diploma in Midwifery, Master of Midwifery, Master of Nursing Leadership and Master of Nursing Practice (retitled Master of Nursing with major strands in Management and Practice). The Board approved the offering of the Bachelor of Business (Accounting) in Hong Kong, where this course was successfully commenced in partnership with Caritas in October 2002.

Jointly with the Pro-Vice-Chancellor (Quality and Outreach), Vice-Chancellor's Strategic Initiatives Funding was gained for the Culture of Evidence project. The Executive Officer (Academic Affairs), Ms Anne Szadura, was seconded to undertake the project. With the guidance of the project reference group, she developed a range of academic indicators and collected and analysed data covering the period 1995-2002. The data will be updated annually allowing the University to benchmark key activities and develop an evidence-based approach to future planning.



Faculties

During the past year the Faculties made a major commitment to developing and implementing responses to their external reviews conducted in 2001 and to preparing for the AUQA audit. Outcomes have included a more strategic approach to course development and review, promotion of a learning-centred focus, increased commitment to research priorities, growth in revenue generation, and embedding quality and a "culture of evidence". The University is indebted to the Deans for their very fine leadership of and great dedication to their respective Faculty. New assignments of Heads of School for the period 2002-2004 commenced successfully and Foundation Deputy Deans of Arts and Sciences, Education and Health Sciences began three-year terms in mid-2002.

Libraries

The Director, Libraries, Mr Chris Sheargold, led several key developments in his portfolio. Following the successful introduction of Electronic Reserve, further progress was made with the digital library. The Director also took responsibility for the establishment of ACU National Online, a small, new organisational unit established to foster online teaching and learning by means of the WebCT learning shell. The Library developed its first Strategic Plan and introduced a new copying and printing service. Students again registered the excellence of the service provided by the Library staff (through the Rodski Survey). I congratulate the Director and his colleagues on all these achievements. Staff were saddened by the resignation

mid-year, due to ill health, of the Foundation Deputy Director, Libraries, Mr Craig Grimison – his contribution to the development of a national library service, introducing information literacy, copyright and numerous other University activities was exceptional.

Academic Staff Development

Associate Professor Paul Chesterton ably coordinated the activities of the Academic Staff Development Unit, including various workshops on all campuses, the Teaching Development Grants scheme, and the biannual professional development for Heads of School. Dr Shukri Sanber provided a professional and dedicated service through the University's Unit Evaluation Program. New initiatives included collating unit evaluation data for several Schools and exploration of widening the Program to address more explicitly teaching evaluation. In Semester 2, 2002, Dr Maureen Strugnell, Chair of the Outside Study Program Committee, undertook an Evaluation of Academic Staff Development. Her report recommended re-locating the Academic Staff Development Unit within a new Institute for the Advancement of Teaching and Learning. Following consultation with the University community, this recommendation is to be implemented in 2003.

Victorian Campuses

In July the University welcomed the new Rector of Ballarat Campus (Aquinas), Dr Anne Hunt. Previously, Dr Hunt had been Principal of Loreto Mandeville Hall in Melbourne and lectured in Theology at Yarra Theological Union.

A key role she played during Semester 2, 2002 was to lead the preparations for the introduction of the Bachelor of Theology in Ballarat. In Semester 1, Mr Blake Gordon generously continued as Acting Rector.

The University again received valued support from Archbishop Dennis Hart of Melbourne and Bishop Peter Connors of Ballarat, the local Catholic Education Offices and health care and welfare providers. These partnerships are of great assistance to Australian Catholic University as it prepares graduates to serve in these sectors. Bishop Mark Coleridge was appointed Episcopal Vicar for Tertiary Education in the Archdiocese of Melbourne and commenced an active involvement with the University.

The potential of St Patrick's Campus was realised further with the development of new research activities, consultancies, professional development and community engagement linked to its environs. The increased profile of the University in Melbourne was indicated in August 2002 by tram drivers announcing the tram stop outside the entrance to the Campus as Australian Catholic University. Central Hall is a focal point for the community engagement of Melbourne Campus (St Patrick's) – this facility was enhanced when a donation from the National Institute of Youth Performing Arts Australia allowed restoration of the Hall's Supper Room. The refurbished venue, renamed the Recital Room, was officially opened on 4 August with a performance by the Vienna Boys' Choir to mark the occasion.

The importance of Ballarat (and Canberra) Campus for the University's distinctive contribution to regionality was clarified and following the arrival of Dr Hunt, she commenced a number of initiatives in support of this goal.

Other major events in Victoria in 2002 included the following:

- > The Lenten Lecture was held at Melbourne Campus on 13 February – Mgr Tom Doyle AO, Director of Catholic Education, Archdiocese of Melbourne and Chair of the National Catholic Education Commission spoke on Catholic Education – An Exciting Journey. Mr Julian Burnside QC and Professor Mary Ann Glendon from Harvard Law School were the speakers at a public forum on Refugees and Human Rights held at Melbourne Campus on 31 May. The Aquinas Annual Lecture entitled The Campaign to Ban Landmines – A Transforming Civil Action? was delivered by Sr Patricia Pak Poy RSM on 26 September, and the eminent Australian writer, Mr Arnold Zable, presented a public lecture, Australia: A Land of Ancestral Journeys, at the Ballarat Campus on 14 October.
- > I hosted a tour of Melbourne Campus for the Victorian and Tasmanian Catholic and Anglican Bishops on 5 March, and a visit of His Beatitude Gregory III, Patriarch of Antioch and All the East, of Alexandria and Jerusalem on 13 November.
- > Graduation ceremonies were held for Ballarat Campus on 20 April and Melbourne Campus on 10 May – honorary doctorates were awarded to Sr Deirdre Rofe IBVM at the Ballarat ceremony and Mgr Tom Doyle AO at the first Melbourne ceremony.
- > Peter Schipperheyn's Madonna and Child in marble for the Chapel at Melbourne Campus was unveiled by Mr Bruno Grollo on 28 May. The Callinan Boardroom at the campus was officially opened by the Most Revd Sir Frank Little DD KBE on 29 October.
- > Three members of the Australian Universities Quality Agency Audit Panel visited Melbourne Campus on 30 August to meet with staff and students.
- > Revd Dr Lawrence Cross convened the third international Prayer and Spirituality in the Early Church conference at Melbourne Campus on 10-13 July. A conference jointly sponsored by the Forum of Australian Catholic Institutes of Theology (FACIT) and the University, Vatican 2: Memory and Hope – 40 Years On, was held at Melbourne Campus on 2-4 October.
- > The Australian launch of the New Catholic Encyclopaedia, 2nd edition was held at Melbourne Campus on 13 November, in association with the Catholic University of America and Thomson Gale Publishers. Professor Emeritus Maev O'Collins' book, *An Uneasy Relationship. Norfolk Island and the Commonwealth of Australia*, was launched by Sir James Gobbo at the Melbourne Campus on 12 December.
- > Two new awards for students were established, the Halliday Prize for Excellence in Youth Studies, (co-sponsored by the Faculty of Arts and Sciences and the Salesians of Don Bosco and awarded annually to a second-year student in the Bachelor of Social Sciences [Youth Studies], demonstrating outstanding academic achievement, excellent fieldwork and a commitment to community service) and the Sarah Frawley Memorial Travel Award (honouring a deceased student and presented annually to an exceptional third-year Primary Teacher Education student to broaden cultural awareness through a fieldwork placement in an Indigenous community). Other awards presented to students in the presence of the donors were the Cabrini Scholarship (Nursing or Midwifery, Melbourne), Sister Assumption Neary Bursary (Nursing, Ballarat), Sr Cecily Dunne Scholarship (Nursing, Ballarat), Backhaus Scholarship (Nursing or Primary Teacher Education, Ballarat), Rotary Club of Ballarat South Scholarships (Nursing, Ballarat) and Michael Myers Scholarships (Management, Ballarat).

- > Several art exhibitions were held in the Melbourne Campus Gallery: Transcendental Tibet displaying works by Tibetan artist, Karma Phuntsok (May), the Touring Blake Exhibition (October), a Tiwi Art Exhibition entitled Zugu Bau Thi Thui: Seven Stars (October) and the inaugural staff art exhibition featuring works from Ballarat and Melbourne Campuses (December). Successful student exhibitions were also held at both Victorian campuses. The impact of the Gallery at Melbourne Campus was enhanced significantly by the establishment of the Gallery Advisory Committee, chaired by Associate Professor Margot Hillel OAM and with expert and high profile membership.

Goals Committee

The Goals Committee, which I chair, sponsored a range of forums, lectures, conferences and other activities, focusing on the unique Mission of the University within Australian higher education. A report of these activities was provided to the University Senate, together with a detailed account of ACU National's contributions to rebuilding education in East Timor. Through evaluating the latter and similar ventures in Tonga, Karachi and elsewhere, the University resolved to support a limited number of Mission-focused offshore projects (in parallel with developing income-generating initiatives). In relation to promoting the University's Mission, two matters were of particular significance in 2002, namely the Mission-focus of the AUQA submission and its endorsement by the Agency, and the ongoing dialogue with FACIT resulting in progress in relation to collaboration in theological education, including in teaching, staffing, distance education and library resources.

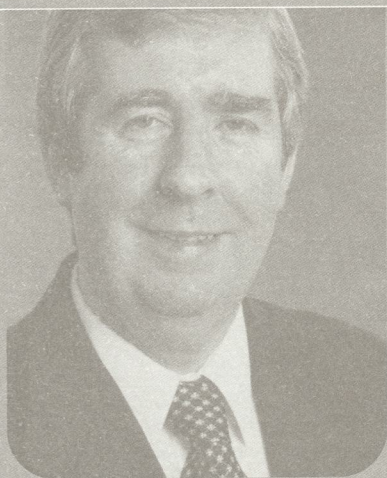
Appreciation

I am most grateful to all those who have assisted the achievements of Academic Affairs in the past twelve months, those noted above but also the many others whose contributions were essential "stones" for the 2002 mosaic. I pay tribute to them for their commitment to the University and to realising its unique mission in the Australian higher education sector.

Professor Gabrielle McMullen

> Report from Pro-Vice-Chancellor (Quality and Outreach)

Two major activities of critical importance to the development of Australian Catholic University dominated the work of the Pro-Vice-Chancellor (Quality and Outreach) during 2002. The first activity was the preparation for and conduct of the University-wide external quality audit by the Australian Universities Quality Agency (AUQA); the second was the construction of the new University campus in Brisbane, McAuley at Banyo, and the relocation of staff and resources from the Mitchelton campus at the end of 2002.



External Quality Audit

Preparation for the first external quality audit of the University, leading to the submission of the University's Quality Portfolio Submission in May 2002, and culminating in the three-day visit of the AUQA External Audit Panel in September involved staff from all organisational units across the University in intensive processes of internal self-review and evaluation for much of the year. Under the direction of the Quality Management Committee, assisted by the Manager, Quality and Outreach, Mr Richard Clifford, all areas of academic, administrative and support throughout the institution undertook an intensive review and analysis of the current quality assurance processes and quality priorities, in the context of the priorities already identified in the University's Strategic Plan 1999-2008. The internal review of quality procedures was supported by a range of reviews of organisational areas, and in particular the Faculty Reviews initiated in 2001.

Staff at all levels were engaged in the self-review process, which was designed to identify major quality achievements in each area of activity and to determine priorities for quality improvement for the next few years. Key achievements and priorities for improvement were incorporated in the Performance Portfolio. Over 150 persons, including governing body members, staff, students and external representatives of key clientele and stakeholders, were interviewed by the External Audit Panel during its intensive three-day visit. The Report of the Quality Audit prepared by the AUQA Panel was released publicly in December. The Report was generally very positive about the quality procedures and achievements of

Australian Catholic University as reflected in the 13 commendations in the Report. Recommendations were also presented in the Report, several of which were consistent with or supplemented the priorities for improvement in the University's Performance Portfolio.

While the whole process of self-review and external audit was demanding of staff time, energy and resources, the general consensus among all those involved was that the process was useful in providing opportunities for institutional self-reflection on the strengths and weaknesses of systems and procedures, and in ensuring the maintenance and improvement of quality throughout the University. The fact that the external audit Report publicly affirmed the quality achievements of the University was perceived as a highly significant outcome for the institution.

Arising from their work on the external quality audit, the Pro-Vice-Chancellor and the Manager, Quality and Outreach were invited to prepare a paper on the process undertaken by ACU National. This was presented to the International Conference of Quality Assessment Agencies in Higher Education in Dublin, Ireland, in April.

Banyo Campus Development Project

The management of the construction project for the new campus located at the historic site of the former Pius XII Seminary at Banyo was the most important priority for the development of the University in Queensland during 2002. The Banyo Project Development Committee, chaired by Mr Alan Druery, Chair of the Queensland Chapter of the University, had oversight responsibility for the construction project itself, with management responsibility at the local level being assigned to the Pro-Vice-Chancellor (Quality and Outreach).

The Manager, Quality and Outreach, Mr Richard Clifford acted as the University's project manager for the construction work at Banyo, while the Campus Manager, Mr Dermott Mallon was responsible for planning the transitional arrangements of staff, office equipment and furniture from the old to the new campus. The professional construction team, comprising the Project Architects, Conrad & Gargett Pty Ltd, Client Representative, CMR Consultants (Australia) Pty Ltd., and the Builder, Leighton Contractors Pty Ltd. had the challenging task of designing and building the new campus so as to maintain the architectural and heritage values already existing on the site, with a combination of refurbishment and new construction, within a limited period of approximately 11 months.

Considerable efforts went into the processes of consultation within the University community, including staff and students, so as to ensure the optimum outcome in the ambience and efficiency of the new campus. At the same time, it was necessary to ensure that the local community in Banyo and Nudgee suburbs was fully informed. These efforts were rewarded by the strong levels of commitment and support for the project, which facilitated the process of successful completion. The majority of the new campus facilities were handed over to the University in December 2002, allowing the relocation tasks and fit-out of the new campus to be carried out in time for the new academic year due to commence in February 2003.

The closure of the campus at Mitchelton marked the end of an important phase in the development of Australian Catholic University and liturgical and social events were held at the campus toward the end of the year. It was recognised by all involved that the establishment of the

new campus at Banyo, represented a major step in the development of the institution and would enable the University to build further on the achievements in the first decade of the University's existence.

Indigenous Education

The commitment of Australian Catholic University to Indigenous Education is emphasised in the Statement on Reconciliation adopted by the University Senate in 1998. The resources provided to the Indigenous Units, located on campuses in Brisbane, Sydney, Melbourne and Ballarat, were increased in 2002 as a response to the increasing demand for enrolments from Indigenous students. These Units work closely with the local Faculty staff to ensure that Indigenous students receive maximum support both on and off campus. In Queensland, the Weemala unit, led by the Co-ordinator Nereda White, experienced continuing growth in student enrolments in Diploma and Bachelor level courses. The story was repeated in Sydney, where the Director of Yalbalinga Ken Ralph and staff of the Unit experienced another year of strong performance both in enrolments and in the success rates of students. In Victoria, there has been a marked increase in enrolments of Indigenous students at each of Melbourne Campus (St Patrick's), and Ballarat Campus (Aquinas), with support provided by the Jim-baa-yer Unit led by Co-ordinator Naomi Wolfe.

With over 300 Indigenous students achieving high rates of success as represented by the graduation of about 40 Indigenous persons each year, the University has taken initiatives to encourage and support studies at postgraduate level by such graduates. One such initiative has been the establishment, with support from the

Queensland Irish Association, of a new postgraduate Indigenous bursary scheme – The Wexford Senate Trust – to provide annual bursaries for the postgraduate Indigenous students undertaking Master's or Doctoral studies at the University campus in Queensland.

A second initiative has been undertaken with the goal of encouraging more research in Indigenous-related areas of interest, with input and collaboration from Indigenous communities around Australia.

The Annual Indigenous Week, held on all campuses, once again provided opportunities for the expression of Indigenous culture and opportunities for issues of importance to the reconciliation process to be addressed.

Online Education

The University continued its development of online education courses through the online education website, ACUweb, led by Manager, Emma Felton and the staff of the ACUweb Office. Postgraduate courses in Education, Management, Nursing, Religious Education and Theology are now available fully online to professionals who prefer the option of study by online mode. About 300 student enrolments were achieved each semester, with high levels of satisfaction being expressed by these students. Technical support for the delivery of these courses is provided by an external specialist provider, NextEd Pty Ltd., which continues to provide an excellent service to the clientele. The University has renewed its contract relationship with NextEd for a further three-year period.

To provide for web-based learning for undergraduate students, and those postgraduate students not undertaking courses fully online, the University has introduced a new online learning

platform, using WebCT software, through its intranet network site ACU National Online. These two online projects will ensure that the University is able to provide high quality teaching and learning through the use of leading edge technologies for all students.

Community Engagement Initiatives

One outcome of the recent internal quality review was the emergence of a more comprehensive approach to the outreach commitments of Australian Catholic University. The traditional commitment of the staff of the institution to community service has been expanded to a more collaborative model of community engagement which recognises the importance of a partnership relationship between its various communities and the University. In preparation for the opening of the new Brisbane campus, an analysis of the needs and aspirations of local communities in the vicinity of the Banyo site (funded through the Vice-Chancellor's special Initiative Fund) was undertaken by the Social Policy and Advocacy Research Centre, led by Dr Ruth Webber. A report entitled *McAuley at Banyo: Engaging with the Community* was published in July 2002. The findings of this study are being used as a basis for exploring how best the University can co-operate with local industry, schools, health and social welfare organisations in the development of the community. All Faculties and campuses of the institution have committed to the expansion of opportunities involving relevant communities. A new Community Engagement Advisory Committee, with internal and external membership has been established to assist in this important task.

Queensland Activities

The Pro-Vice-Chancellor (Quality and Outreach) continues to give high priority to ensuring that the University expands its services in teaching and research projects in Queensland, including Catholic communities throughout Queensland. In this regard, a significant initiative designed to extend the availability of Religious Education programs for beginning teachers in Townsville and Cairns has been developed during 2002, with senior University officers visiting Townsville for negotiations with the Townsville and Cairns Catholic Education Office representatives.

Staff and students of the Brisbane Campus have contributed to the ongoing activities associated with the Brisbane Archdiocese Synod. Staff from all Faculties based in Queensland have been active in a variety of teaching, research and consultancy activities in Queensland. The Centre for Early Christian Studies has continued its research activities, with further success in attracting ARC and other research grants.

Co-operation with the staff of St Paul's Theological College, which is co-located on the Banyo site has been actively pursued during 2002, laying the groundwork for a collaborative approach to Theology Education in the Queensland Catholic community in future years.

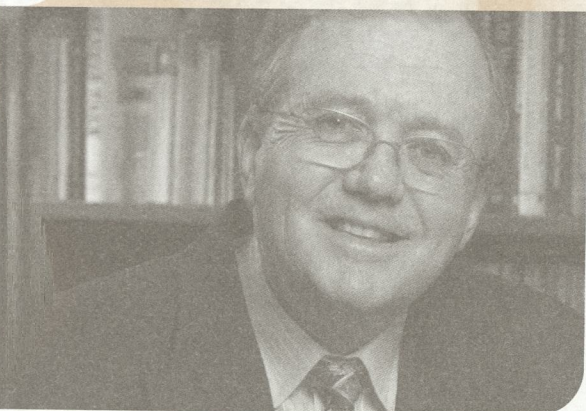
An Agreement has been signed with the Brisbane Institute of TAFE for collaboration in the offering of articulated and possible joint courses in areas including Business, Computing, Visual Arts and Social Sciences in coming years. This initiative has already borne fruit with the offering of ELICOS English language programs by TAFE for

international students recruited by ACU National. It is anticipated that this initiative will lead to increased enrolments of international students in degree courses at the Brisbane campus. The appointment of a Manager, International Education (Brisbane), Sofia Gomez, is anticipated to enhance the international profile of the Brisbane Campus (McAuley at Banyo) in future years, with increasing enrolments of international students.

The Ministry team, including Campus Minister Andrew Beiers and Chaplain Fr Morgan Batt, have been very active during the year in promoting religious and spiritual opportunities for students and staff. In addition to weekly liturgies provided on campus, the Ministry team has contributed significantly to all major occasions and events, including Orientation Week, Careers Night and the Multicultural Day held on campus. Special liturgies were held to mark the end of the era of McAuley Campus at Mitchelton, and to provide end-of-course opportunities for prayer and reflection by students from various Faculties on the campus who were completing their courses of study. The recently appointed Dean of Students, Associate Professor Tim O'Hearn, attended the campus on several occasions, exploring ways of enhancing the opportunities for religious and spiritual engagement by staff and students. The work of the Student Services team led by Carolyn Toonen continued to play a central role in supporting students through the provision of professional counselling services and academic skills training.

Professor Muredach Dynan

> Report from Pro-Vice-Chancellor (Research and International)



North Sydney Campus (MacKillop)

The University, friends and colleagues honoured the late Carlo Generali by the naming of the Carlo Generali Garden in recognition of his service to the University over many years.

A former residential property adjacent to the main campus has been purchased with a view to enhancing the facilities available to the campus, and contracts written for the preparation of two additional lecture theatres near the campus.

Strathfield Campus (Mount Saint Mary)

During the year, the Blake Travelling Exhibition, April Glaser-Hinder, TECHO, and other exhibitions of works by Sydney Secondary Schools Religious Art Exhibition and Graduating Students Art were mounted. Tournament of the Minds, Advent Fest and Christmas Carols events were also held on campus. A new computer laboratory with the latest Macintosh computers was fitted out to facilitate the launch of the Bachelor of Visual Arts and Design course.

The campus hosted a Liturgical Ceremony to recognise the Sponsors of the Pilgrimage of the Relics of Saint Therese of Lisieux, in which the Relics were present on the campus for a morning.

Canberra Campus (Signadou)

Associate Professor Catherine McLoughlin was appointed to the School of Education. Two staff members in the School received their doctorates. The School has continued to develop close links with the Catholic Education Office of Canberra-Goulburn Archdiocese.

Ms Jo Gaha, President of the Australian Association of Social Workers, was appointed an Honorary Fellow in the School of Social Work. Professors John Malony and Maev O'Collins were re-appointed as Adjunct Professors. The School of Social Work received full five year accreditation for the Bachelor of Social Work program.

In second semester, the Master of Youth Studies commenced. This was developed in partnership with the ACT Department of Education, Youth and Family Services and Canberra and Melbourne Campuses.

ACUcom

ACUcom has had another very successful year with both its National and International Divisions being very profitable. ACUcom won significant ongoing tenders, including ETTE in Victoria, LOTE and TESOL courses in NSW.

Study Abroad programs have been running very successfully with students from Marist College, American University and Fairfield University in the United States as well as Friburg University in Germany enrolled in a variety of courses across ACU National.

Sydney and Canberra Campuses

Internationally ACUcom has significantly increased its profile and now has many pathway programs that allow students to enter the bachelor degrees in the University. These courses give students the confidence they need to participate in a full Faculty course.

International Education

2002 was again a very successful year for the enrolment of international students. A total of 611 full fee-paying degree students from many countries were enrolled. The largest enrolments were in Business and Informatics, with Nursing programs a very close second. Enrolments in Education courses are increasing steadily.

All Faculties are continuing to work to raise their international profiles with increased enrolments of international students and by internationalizing their curricula. There has also been a noticeable increase in exchange participation by students.

2002 saw both the AUQA Review and a Review of International Education. Whilst there were issues to be addressed arising from both Reviews, it was pleasing to note that International Education received a good assessment.

ACU National is in a strong position to continue to increase international student enrolments. These enrolments are expected to come from an increasingly wider range of source countries.

Research

The impressive growth of ACU National's research activity in its first decade can be measured in many ways.

The number of students undertaking research higher degrees has risen nearly ten-fold over the past decade, with nearly 200 candidates enrolled in 2002.

Half of the University's staff now hold doctoral awards while 93 percent hold higher degree awards.

Annual research funding to the University has increased five-fold, to nearly \$2.4 million, in the five years to 2002. Moreover, that growth has been accompanied by a broadening of the funding base. In 2001, the private sector provided nearly half of ACU National's research income; in 1997, their contribution was only 3 percent.

These trends highlight both a growing awareness of the breadth and depth of ACU National's research skills, and that these skills and resources are of commercial benefit to the commercial and government sectors.

Ageing and Quality of Living

ACU National is playing a leading role in helping mature-age people enjoy healthy, productive, positive and satisfying lives. Ageing and Quality of Living has been identified by the Vice-Chancellor as national importance for research in ACU National. It is based on the priority needs established by the National Research Priorities Task Force of the Department of Education, Science and Training (DEST).

Foundation work on the Ageing and Quality of Living project has begun including interactive research and information sharing through an electronic newsletter. The newsletter, which has received a tremendous response, features news and views on healthy ageing and quality of living and summaries of national media stories, publications, press releases, events, government facts and figures and other information pertinent to Australia's ageing population.

Professor John C. Coll

The 10th year of the Faculty of Arts and Sciences was marked by several significant developments. Chief among these were:

- > the Report of the External Review of the Faculty conducted by a Review Committee chaired by Professor JN Najman of the University of Queensland;
- > participation in the audit of the University by the Australian Universities Quality Agency;
- > the appointment of the Foundation Deputy Dean of the Faculty, Associate Professor LG Crossley; and
- > the provision of responses to the Ministerial Review of Higher Education in Australia.



The Faculty addressed each of the recommendations of the External Review, the Faculty Board having discussed the Faculty's actions to implement them with the Vice-Chancellor (April Board meeting), the Pro-Vice-Chancellor Academic Affairs (August Board meeting) and the Pro-Vice-Chancellor Research and International (November Board meeting). By year's end the Faculty had commenced to integrate into its action plan the steps necessary to implement the Recommendations of the Quality Audit Team Report.

In 2002 the Faculty taught 41.8 percent of the University's weighted DEST-funded EFTSU. As well the Faculty generated another 508 EFTSU in fee-paying load, an increase of 121 EFTSU over 2001. These latter produced for the University gross fees of \$5.7 million, an increase of \$2.1 million over 2001 fee earnings. The Faculty's increased performance in fee earnings over time is highlighted with a comparison of 1999 earnings (\$852,000) to 2002 earnings (\$5.7 million). In this period the Faculty has lessened its dependence on government funds, a key target of the University's Strategic Plan, from 96 percent to 83 percent.

2002 saw both the Bachelor of Business and Bachelor of Information Systems reviewed, the development of new dual degrees, Bachelor of Theology/Bachelor of Social Science and Bachelor of Nursing/Bachelor of Arts, the latter with the Faculty of Health Sciences. These dual degrees are in line with the Strategic Plan. Significantly, the Australian Association of Social Workers renewed the professional accreditation of the Bachelor of Social Work degree until 2007 with high praise for the course. The Institute of Chartered Accountants and CPA Australia both reaccredited the Bachelor of Business (Accounting) until 2007 commending the Faculty and granting the first stage of professional accreditation to the Faculty's offering of this degree in Hong Kong. The Faculty has also secured full registration for this degree from the Hong Kong Government Council of Academic Accreditation.

Professor Pauline Allen FAHA and Associate Professor Shurlee Swain won ARC Discovery Grants for the 2003-2005 triennium and Associate Professors Bessant, Swain and Hillel and Dr J McLaren won ACU Large Grants for their respective research projects. Pleasingly, seventy (70) academic staff in the Faculty produced DEST-approved, externally audited research publications or creative output. By year's end the Faculty was supervising over 130 research higher degree students, 42 of whom received Faculty funds towards their research projects. Mr VE Rischitelli, BMusic First Class Honours, was awarded the Faculty Honours Medal and Ms CM Cass, BSocial Sciences – GPA 6.9 out of a possible 7.0, won the Faculty Pass Medal.

In 2002 Dr ML Hillel OAM was promoted to Associate Professor, Dr S Swain promoted to Associate Professor with Reader status and Dr W Franzsen, Dr K Hide, Dr G Moore and Dr L Thornthwaite promoted to Senior Lecturer. Eighteen (18) Faculty staff received professional leave from the University under one of three schemes, Outside Studies Program leave, Institute for the Advancement of Research Leave or the doctoral time release scheme. Together the staff of the Faculty contributed to 135 Committees external to the University, undertook 115 consultancies outside the University and presented 185 invited lectures, seminars or workshops to outside bodies.

As the year closed the Faculty presented to the Vice-Chancellor for the University a commissioned piece of sculpture by Mr SA Davidson as the Faculty's gift to mark its first ten years of operation.

Professor Peter Carpenter
Dean

In 2002, the Faculty had a unique opportunity to profile its disciplines, goals, procedures and achievements in meeting the challenge of quality management in teaching and learning, research and scholarship and community engagement. A highlight of the year was the selection of nursing within the Faculty for in-depth study by the AUQA review panel.



Teaching and Learning

The year 2002 realised an emphasis on demonstrated quality in teaching and learning in the disciplines of nursing, midwifery and exercise science. The Faculty maintained its student focus with a culture supportive of high quality teaching and student learning.

Consistent with the ACU National policy on course development and review, the Faculty conducted reviews of existing courses, i.e. Graduate Diploma/Master of Midwifery, Master of Nursing Leadership, Master of Nursing Practice and Master of Nursing (Research). The Faculty also developed a course proposal and curriculum plan for a dual degree, i.e. Bachelor of Nursing/Bachelor of Arts for introduction in 2003. The Faculty expanded its postgraduate course offering, with development of a course proposal and curriculum plan for a Master of Midwifery (Research) course with a view to obtaining University approval for introduction in 2004.

Research and Scholarship

In 2002, the Faculty continued to develop and strengthen its research and scholarship activities relevant to its discipline areas. The Faculty's research profile includes the areas of ageing, healthy ageing, and aged care; family health, child, adolescent and women's health; and acute and critical care, palliative and extended care; and exercise and sports science including specific areas of rehabilitation and health promotion.

Some of these areas of research are addressed in the Faculty by collaboration across its disciplines, and with external collaborators.

Following an agreement between the University and St Vincent's Hospital, Melbourne, Mercy Health and Aged Care in 2001, the recruitment process for the position of Chair in Aged Care Nursing was undertaken in 2002.

An interesting highlight was the achievement by Associate Professor Geraldine Naughton who won the F.E. Johnson \$25,000 Memorial Fellowship for "Outstanding Achievement by an Established Researcher in the Field of Sports Medicine".

Community Engagement

The Faculty continued to maintain and extend its community engagement activities. The schools maintained their links with local and regional organisations, hospitals and health care industries. Staff members were involved in professional and community activities in various capacities in line with their areas of expertise. A great deal of work was undertaken to maintain partnerships with external organisations, especially those consistent with the University's strategic objectives and the Faculty's strategic plan. The Faculty's six honorary appointees as Clinical Associate Professor and Clinical Fellow offered valued contributions in numerous areas during the year.

Quality

The year 2002 saw an emphasis on the importance of quality assurance in all areas of the Faculty's activities and initiatives. Involvement in the AUQA audit, especially in regard to teaching and learning in nursing was a highlight of the year. The Faculty prepared documents, which assisted the AUQA panel in understanding the operations of the Faculty. It documented the quality assurance systems and processes, performance indicators used to monitor quality assurance systems, summary of key strengths and summary of significant areas for improvement.

Following the External Review of the Faculty of Health Sciences in 2001, the Faculty undertook to align and streamline its operations in consultation with the Schools in a number of areas. Policies and procedures in teaching and learning and research and research training were strengthened on a Faculty wide basis.

Internationalisation

Consistent with the Faculty's commitment to meeting the challenge of globalization and strengthening international activities in 2002, the Faculty increased its efforts through staff participation. The Faculty increased recruitment of international students and fostered its ties with international institutions.

Professor Elizabeth Cameron-Traub
Dean



> Faculty of Education Report

General Overview

The Faculty of Education at Australian Catholic University completed 2002 having enjoyed another year of considerable achievement.

Learning and Teaching

a) Revisioning Teacher Education for the 21st century

The Quality Taskforce of Faculty Board assumed responsibility in 2002 for conducting "Revisioning Workshops" in each of our state locations. These workshops provided an important opportunity for professional growth and renewal for our staff and resulted in the articulation of key attributes of graduates of the Faculty of Education at ACU National.

b) Social Justice Education and Service Learning

Social Justice Education and Service Learning are areas of particular importance in the Faculty. In 2002 colleagues in the School of Education in NSW furthered this agenda by completing a study on Service Learning sponsored by the Commonwealth Government. In 2002 the Catholic Educational Leadership Flagship and the School of Education NSW received funding from the Vice-Chancellor's Strategic Intent Fund to sponsor an international symposium and develop an international research Network on Social Justice and Education in 2003. This will continue to be an area of very high priority for the Faculty in the future.

Research and Scholarship

a) Flagships and Centres

In 2002 we saw a strengthening of the work of Faculty Flagships and Centres in areas of strength, including: Moral, Spiritual and Religious Education; Catholic Educational Leadership; Lifelong Learning; and Mathematics Education. Faculty members associated with these areas of research excellence have been very successful in attracting external funding for the conduct of problem focussed research from funding bodies including: the ARC; the Australian Commonwealth Government; and Catholic employing authorities.

Over the next triennium the Faculty plans to:

- > Increase the number of staff who are "research active"
- > Increase the publication output of staff in DEST classified research publications
- > Increase the number of research and teaching grants obtained by staff
- > Increase the number and quality of higher degree candidates
- > Integrate the Faculty system for the governance of its research effort into the overall University system.

Internationalisation

a) The Development of an International Plan, like all the other endeavours of ACU National, is informed by the distinct mission of the University, particularly as it relates to the moral, spiritual, ethical and social justice challenges of our work. In an attempt to meet these challenges, the Faculty's International Plan incorporates the engagement of its students and staff in

international awareness and intercultural understandings, especially in contemporary problems and moral debates. Also reflected in the Faculty's plan is its mission of outreach to international communities, especially underprivileged communities.

b) The Consolidation of Institutional Links

The Faculty is working towards the development of a network of inter-institutional linkages, which provide the base, framework and infrastructure for a series of exchanges – of research thinking and projects, publications, of staff and of students. In 2001 we were honoured to have the Institute of Education at the University of London, one of the most outstanding Faculties of Education in the world, enter into an inter-institutional link with our Faculty. In 2002, a member of the School of Education, NSW, spent a period as a Visiting Fellow at London Institute and substantially benefited from the experience.

Financial management

a) Revenue generating courses

A number of schools have been very successful in developing revenue generating, fee paying postgraduate courses. In 2002 considerable success has also been experienced in generation of fee paying income in undergraduate courses.

b) Surplus

In 2002 the Faculty again concluded the year with a surplus. Careful fiscal management and the efforts of the staff in developing revenue-generating activities contributed to our continuing fiscal success.

Catholic Identity and Mission

a) Strengthening our Mission Focus

In 2001 a Taskforce of Faculty Board was created to address the issue of mission-focussed units. This Committee continued its important work in 2002. The Faculty identified mission-focussed work as being undertaken in these ways

- > Explicit approach
- > Contextual approach
- > General skills and consciousness-raising
- > Professional experience.

Student Services and needs

a) Development of A Student Support Plan In 2002 a Student Support Plan was developed for the Faculty. The Plan contains the following key elements:

- > Strategies which strengthen liaison and collaboration between the Faculty and the Academic Skills Unit (ASU) and which build upon existing relationships between individual lecturers and ASU Advisers
- > Proposals for improving the accessibility of the ASU's services for students that are cost effective
- > Proposals for linking the work currently being undertaken in the area of graduate attributes with initiatives of the ASU
- > Suggestions as to how institutional data can be used to assist in the targeting of these services.

b) Pastoral Care and Encouraging Increased Levels of Independence among Students

The pastoral care dimension of student support continues to be a major strength of the education offered to students in the Faculty of Education. The Internal Quality Audit affirmed the commitment of staff to this aspect of our work.

Community Service and Outreach

a) The Development of a Strategic Plan for Community Engagement and Marketing

The External Review commended the Faculty on its range of external relationships and partnerships, especially our work undertaken with Catholic Education Offices, Catholic social welfare agencies and religious orders. In 2002 the Community Service and Outreach Committee of the Faculty Board developed a Strategic Plan for Community Engagement and Marketing. An essential component of this plan is the achievement across all campuses of some of the excellent initiatives which to date have tended to be based in particular settings.

Staffing

a) Development of a Staffing Plan

In 2002 the Faculty began collecting data to develop a Staffing Plan for the Faculty which pays particular attention to the age-profile, succession planning, and recruitment of early-career academics.

The Staffing Plan will be completed in 2003 for implementation in 2004 and beyond.

Management

a) Participative Leadership and Collegiality in the Faculty

The External Review expressed its regard for the collegiality, commitment and participative leadership evident in our Faculty. The Faculty is fortunate to have so many staff who have contributed to our culture of collegiality and participation.

b) Quality

In the year 2002 the Faculty continued to make advances in the area of quality improvement and management. The Quality Taskforce of Faculty Board has been most effective in creating a commitment to ongoing improvement, quality assurance and delivery.

c) Appointment of a Deputy Dean

In 2002 a Deputy Dean was appointed to assist in providing leadership for the Faculty.

Initiatives and niche markets

The Faculty is constantly working to identify new opportunities for expansion and growth.

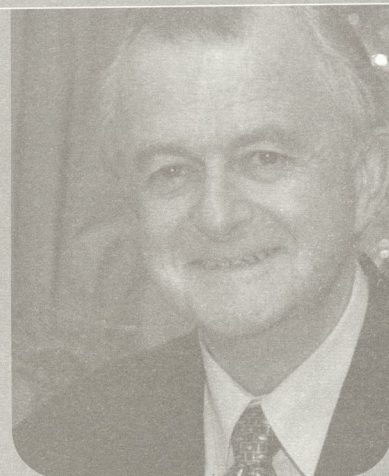
In light of recent appointments in the area of marketing in the university the Faculty is working with colleagues in marketing to consider proposals relevant to marketing our educational programs, flagships, new initiatives and niche markets.

Conclusion The Faculty of Education at Australian Catholic University in 2002 continued its journey of revisioning, re-orientation and renewal. This has been made possible by the immense commitment, dedication and hard work of our staff and by the effectiveness of our leadership team. During the course of 2002 we developed a number of important Strategic Plans to further improve the quality of our work. In 2003 our major focus will be on the implementation of these Plans. We are confident in the mission which lays the basis for our work and in the values which inform all that we do. Our next major challenge is in the "how" of educational reform-in improving the ways and means by which our mission, values and goals can be more effectively achieved in line with our strategic goals and our unique place in Australian Higher Education.

Professor Judith Chapman

Dean

The year 2002 witnessed major changes in the portfolio of Student Services. In February the foundation Dean of Students, Director of Ministry and Director of Equity and Equal Opportunity, Sr Rosemary Lewins, op, resigned from the University to assume the role of Prioress of the Dominican Sisters. Ms Maria Wagner was appointed to the position of Acting Dean of Students in March, and Associate Professor Tim O'Hearn was appointed Acting Dean in July until appointed as Dean of Students in October 2002.



> Dean of Students Report

The University conducted a Review of the portfolio in February; all staff contributed to the Review which made a number of recommendations. The staff also contributed significantly to the Australian University Quality Agency audit of the University. The AUQA committee also interviewed a significant number of students from all campuses, and the Presidents of the student representative organizations and the Student Senator.

The six student councils/associations organized social, religious, cultural and sporting events for their student bodies on all campuses. Each association was actively involved in Orientation Week activities and camps, Open Day and the Opening and Closing liturgies. Activities were organized in conjunction with campus ministry staff and included Spirituality in the Common Room at Mount Saint Mary, Multicultural Day at McAuley, Night Patrol with St Vincent de Paul at Aquinas, Signadou and St Patrick's, and regular visits to Villawood Detention Centre to bring comfort to the young children and adolescents in particular. Students are involved in running summer camps for disadvantaged children and organizing in fundraising activities to assist the poorer members of the community.

The Student Senator and six Presidents form ACUNSA (Australian Catholic University National Student Association). This group met face to face three times and usually monthly by videoconference to discuss matters such as marketing, national sports representation and justice issues on the campuses.

The Vice-Chancellor assisted a number of students to attend World Youth Day in Montreal, the National Student Leadership Forum on Faith and Values in Canberra, students competing in international sporting events, and students in crisis. The development of youth leadership for justice remains a priority for the University and assistance is provided by a number of sponsors to pursue this objective.

In 2002 Student Services developed a more modern website. Academic Skills Advisers developed further materials on the web, Signadou provided accommodation assistance via the web, and the Counselling staff purchased software for students to access better career advice. These developments are continuing to serve the student needs better.

Staff took part in monthly teleconferences with their professional groups. Each group also met for a conference during the year. All staff were involved in activities on their local campuses. One was the general staff representative on Senate. Staff continued their own professional development by attendance at conferences within and beyond Australia and, in the case of Counsellors and Campus Ministers, through regular external supervision. Staff worked in collaboration with academic staff on a number of programs; Academic Skills staff worked with academics to assist students to improve their writing skills and Campus Ministers were actively involved in student community service programs.

Associate Professor Tim O'Hearn
Dean

This review summarises operating revenue and expenses and the year-end financial position of the University. The 2002 'Financial Statements and Reports', including 'Independent Auditors' Report to the Members of Australian Catholic University Limited', are published separately.

Table A indicates actual revenue and expenditure figures for 2001, operating budget and actual revenue and expenditure for 2002 and operating budget for 2003.

The charts also illustrate the source and use of operating funds in 2002.

The University is in a sound financial position. In 2002 the University achieved a net operating profit of \$7.36 million (2001: operating profit \$1.02m).

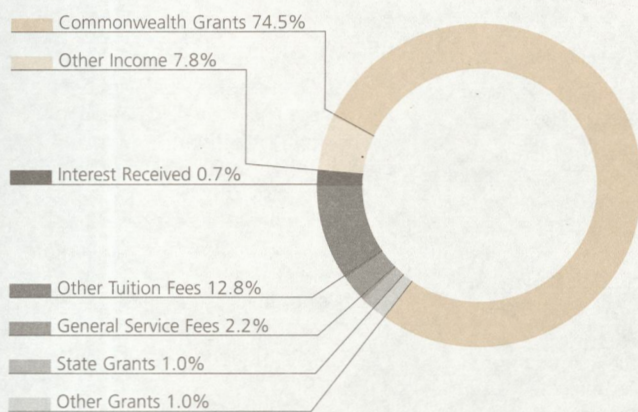
A significant impact on operating profit in 2001 was the write down of the asset carrying value of the McAuley campus at Mitchelton, which resulted in a loss on revaluation of the asset of \$6.62 million.

Total operating revenue increased by \$9.2 million, (9.6%) from 2001. The increase included \$1.00 million in State Grants and \$4.18 million in Commonwealth Grants which were specific to the McAuley at Banyo Capital Project. The University remains highly dependent on Commonwealth Grants although Tuition Fee income increased by in excess of 30% from 2001. Particular emphasis on growth in fee and other non-government grant revenue continues to receive a high priority.

Total Operating Expenditure increased by \$2.82 million (3.0%). The project to relocate the McAuley campus had a significant impact on cash flow in 2002 with cash outlays in excess of \$22 million primarily financed from University cash funds. The financial statements show a working capital deficit of \$6.35 million (2001 surplus \$1.61 million). The cash position is in line with the Company's strategic capital planning and 2003 will see a significant improvement as revenue allocated to fund the expenditure is received.

University assets totalled \$194.50 million as at 31 December 2002, an increase of \$12.2 million (6.2%). Property, Plant and Equipment grew by \$19.3 million (13.9%), principally reflecting the McAuley at Banyo capital project.

>> 2002 Revenue



>> 2002 Expenditure



Table A

	2001 Actual \$K	2002 Budget \$K	2002 Actual \$K	2003 Budget \$K
Commonwealth Grants	71,483	75,280	77,816	78,541
State Grants	4,760	3,270	1,020	0
Other Grants	1,081	866	1,079	1,126
General Service Fees	2,090	2,150	2,274	2,400
Other Tuition Fees	10,085	7,048	13,325	12,607
Interest Received	1,003	1,350	775	1,400
Other Income	4,779	2,467	8,159	3,568
Total Operating Revenue	95,281	92,431	104,448	99,642
Salary & Associated Costs	60,901	58,714	64,248	65,571
Non-Salary Items	33,362	33,717	32,833	34,071
Total Operating Expenditure	94,263	92,431	97,081	99,642
Operating Surplus	1,018	0	7,367	0

> Members of the Senate

Name	Qualifications
Tanya Bruty	
Associate Professor Philip Clarkson	BSc, DipEd (Monash), BEd (LaTrobe), MEd (Melb), PhD (Qld)
Carolyn Toonen	BSoc Wk (Qld)
Anne Cummins	BA (Canberra CAE), MA (Macq), Grad Dip Rel Stud (ACU)
Associate Professor Carolyn Dowling	BA, BEd (Melb), PhD (Monash), FACS, MACCE
Alan Druery, OAM	BA, BEdSt, MEd (Admin) (Qld), FQIEA, FACE
Edward Exell, AM	BA (Hons) (Melb), BEc (ANU)
Most Reverend Bishop James Foley	DD DPh (Leuven)
Associate Professor Pamela Gibbons	TC, BA DipEd MEd PhD (Syd), FACS
Gerald Gleeson, AC, KCSG	BSc, MEd (Syd), BEd (Melb), Hon DLitt (CSU), Hon DLitt (UNSW)
Paul Gross	BE (Syd), MEngSc. (UNSW), MPA (Princeton)
Paul Hoy	LLB (Melb)
Brother Julian McDonald, CFC, AO	BA DipEd (Syd), Cert Rel Formation (St Louis), Grad Dip Lang in Ed (CSU)
David O'Connor, AM	BA (UNE), CertPersAdmin (Syd Tech)
Susan Pascoe	BA DipEd, Grad Dip Special Ed MEd (Hons) (Melb), FACE, FACEA
Professor Peter Sheehan, AO	BA, PhD (Syd), FAPsS (Hon), FASSA (Hon), FAPA, FACE
Associate Professor Ruth Webber	TPTC, BA, MEdSt (Monash), BEd (LaT), PhD (Melb)

> Principal officers of the University

Chancellor

Brother Julian McDonald CFC, AO, BA DipEd (Syd), CertRelFormation (St Louis) GradDiplAnInEd (CSU)

Brother Julian was appointed Chancellor of ACU National in November 2000. He has been a member of the University Senate since 1992, and was previously Pro-Chancellor from 1995-2000. In October 2002, Brother Julian concluded a 12-year term as Province Leader of the Christian Brothers in New South Wales, Australian Capital Territory and Papua New Guinea. He is currently Executive Officer, National committee for Professional Standards: a committee of the Australian Catholic Bishops and the Australian Leaders of Religious Institutes.

He joined the Christian Brothers in 1960 and went on to gain a Bachelor of Arts degree and Diploma of Education at the University of Sydney. He received a Certificate of Religious Formation from St Louis University and a Graduate Diploma in Language in Education from Charles Sturt University. In 1973 he became Director of Christian Brothers Formation at Strathfield, NSW, and held this position until 1981. Brother Julian spent two years (1988-1990) in Rome as Director of Christian Brothers' International Renewal Programme.

He is completing an MA Hons in the field of children's literature at Charles Sturt University.

Pro-Chancellor

Edward Exell AM, BA (Melb) BEc (ANU)

Mr Exell has been Pro-Chancellor of the University since November 2000. He is Business Manager of the Catholic Archdiocese of Melbourne. He is Chair of the Standing and Finance Committee of the University and also chairs its Audit Committee. Mr Exell was born in Melbourne and educated at Xavier College, Melbourne, Loyola College, Watsonia, as a Jesuit scholastic and the Australian National University. Before joining the Catholic Archdiocese he was Deputy Managing Director of the Australian Trade Commission.

Mr Exell has served on the National Board of Employment Education and Training, the Mercy Health and Aged Board and is a member of the School Council of Xavier College.

Vice-Chancellor

Professor Peter Sheehan AO, BA, PhD (Syd) FAPsS (Hon), FASSA (Hon), FAPA, FACE

Professor Peter Sheehan was appointed Vice-Chancellor of ACU National in February 1998. He obtained an honours Bachelor of Arts degree from the University of Sydney in 1961 and was awarded a Doctor of Philosophy in Psychology in 1965. After completing a postdoctoral fellowship at the University of Pennsylvania Hospital (1965-1967), he was Assistant Professor of Psychology at the City College of the City University of New York (1967-1968), lecturer/senior lecturer at the University of New England, Armidale (1968-1972) and

Professor of Psychology at the University of Queensland from 1973-1997.

He was Chair of the Queen Elizabeth II Fellowships and Australian Research Grants Committee from 1983 to 1985 and Chair (for 1992-1993) of the Australian Research Council's Research Grants Committee, and is past Chair of the Council's Social Sciences and Humanities Panel. He is also Past President of the Australian Psychological Society and was President of the International Congress of Psychology in 1988. From 1991-1993 he held office as President of the Academy of the Social Sciences in Australia (ASSA), and was made Honorary Fellow of the Academy in 1996.

Pro-Vice-Chancellors

Professor John Coll PhD, DSc (Syd), FRACI

Professor Coll joined ACU National in 1996 as Pro-Vice-Chancellor (Academic Affairs) and has held his current role of Pro-Vice-Chancellor (Research and International) since 2000. He is Professor in Chemistry at the University. Professor Coll commenced his academic career at James Cook University in Queensland as a lecturer in 1972. Before joining ACU National he was Pro-Vice-Chancellor (Research) at Central Queensland University.

Occupation	Date of appointment
Student	1 January 2001
University Academic	14 April 2000
Counsellor	1 October 1998
Educational Consultant	30 September 1994
University Academic	1 October 1998 (term of office expired 22 May 2002)
Educational Administrator	1 January 1991
Professional Administrator	30 September 1996
Catholic Bishop	30 September 1994
University Academic	22 May 2002
Company Director	5 November 1990
Consultant	1 October 1998
Solicitor	1 January 1991
Member of Religious Congregation	30 September 1992
Public Servant	14 April 2000
Educational Administrator	20 September 2001
Vice-Chancellor	1 February 1998
University Academic	14 April 2000

Professor Coll is the author or co-author of more than 150 refereed research papers with his students and research colleagues. His research in the areas of natural products chemistry and marine chemical ecology awarded him a Doctor of Science degree with his alma mater, the University of Sydney. He is a Fellow of the Royal Australian Chemical Institute.

Professor Coll has researched extensively overseas, in the USA, London and Paris, and has collaborated with a number of pharmaceutical companies and cancer research institutes in the quest for drugs from the sea.

Professor Muredach Dynan BSc, MSc, MSc(Ed.), Dip.Ed, PhD

Professor Dynan was appointed Pro-Vice-Chancellor (Quality and Outreach) in 1995. He was previously principal of ACU National's NSW campuses. He is responsible for university-wide developments and procedures in the area of quality management, and oversees a range of outreach activities of the University including Indigenous education and online education.

Professor Dynan has had extensive teaching, research and administrative experience in Northern Ireland and Australia in a range of academic positions. He has carried out consultative roles in Cyprus and Guyana. His research interests include science education, educational innovations, educational evaluation and quality management.

Professor Gabrielle McMullen BSc, PhD (Monash) FRACI

Professor McMullen has held her current position as Pro-Vice-Chancellor (Academic Affairs) since 2000. She is responsible for the ACU National faculties, library and academic staff development as well as the Victorian operations of the University. Professor McMullen was previously Rector of Ballarat campus for five years. Her current research interests include issues in the history of science and bioethics.

Rectors

Associate Professor Peter Camilleri BsocStud (Syd), MSc (Surrey), PhD (Flin) – Canberra

Dr Anne Jean Hunt BSc (Melb), DipEd (Melbourne College of Education), BEd (Monash), BTheol (YU of Melbourne College of Divinity), MSc (Ed) (Fordham), MA (Theol) (Catholic Theological Union, Chicago), DTheol (Melbourne College of Divinity) – Ballarat (from July 2002)

Deans

Dean, Faculty of Arts and Sciences

Professor Peter Carpenter TC, BEd, MA, PhD (Qld) – Melbourne

Dean, Faculty of Education

Professor Judith Chapman AM, BA DipEd (Melb), BEd (LaT), EdD (NColorado) FACE FACEA FWAIEA – Melbourne

Dean, Faculty of Health Sciences

Professor Elizabeth Cameron-Traub RN, BA, PhD (Flin), GradDipN (Ed) (Armidale CAE) MAPS FCN (NSW) FRCNA – North Sydney

Dean of Students and Director of Ministry

Sister Rosemary Lewins OP, (resigned 2002), BA DipEd (NE), MA (San Francisco) MACE

Professor Tim O'Hearn (appointed Dean of Students July 2002), BA (Monash), BEd (Melb), MA (Macq), MA (Syd), PhD (Macq)

Directors

Executive Director of University Services

John Cameron MCom (UNSW) CPA

Director Finance

John Ryan BBus (UTS) CPA

Director of Information and Communication Services

Barbara Olde GradDipSc, InfoSys (CSU)

Director of International Education

Valerie Hoogstad (Acting) BA (Syd), MA (Macq) – North Sydney

Director of Libraries

Christopher Sheargold BA (Syd) AALIA – Melbourne

Director Marketing

Patricia M Ruzzene BA (UNSW), Grad.Cert TCHG (UTS) MACommMgt (UTS) – North Sydney

Director of Personnel Relations

Dr John Barclay BA, DipEd, DipLib (UNSW), MEd (Syd), PhD (Lough), GradDipEmpRels (UTS) – North Sydney

Academic Registrar

Gabrielle Westmore BA (Qld) – Brisbane

Honorary Degrees awarded 2002

Sr Evelyn Woodward RSJ

Honorary Doctorate conferred at the Canberra Graduation ceremony Friday 5th April 2002

Mr. John Eales AM

Honorary Doctorate conferred at the Brisbane Graduation ceremony Wednesday 10th April 2002

Professor John Dwyer AO

Honorary Doctorate conferred at the Sydney Graduation ceremony Friday 3rd May 2002

His Eminence Cardinal Edward Bede Clancy AC

Honorary Doctorate conferred at the Sydney Graduation ceremony Friday 3rd May 2002

Her Excellency Professor Marie Roslyn Bashir AC

Honorary Doctorate conferred at the Sydney Graduation ceremony Friday 3rd May 2002

Sr Deidre Ann Rofe IBVM (deceased)

Honorary Doctorate conferred at the Ballarat Graduation Saturday 20th April 2002

Reverend Thomas Michael Doyle AO

Honorary Doctorate conferred at the Melbourne Graduation Friday 10th May 2002

Faculty Medals

Faculty of Arts and Science

Pass Medal

Rima Mourad

Faculty of Arts and Sciences

Honours Medal

Kezi Jade Arnold

Faculty of Education Pass Medal

Janet Elaine Teo

Faculty of Health Sciences Pass Medal

Dale Robert Sebire

Excellence In Teaching Awards

> **School of Social Work,**

Canberra Campus

Ms Kandie Allen-Kelly

> **School of Arts and Sciences,**

Brisbane Campus

Dr Delyse Ryan

> **School of Religious Education,**

Melbourne Campus

Dr Kathleen Engebretson

Award for Excellence in Post-Graduate Research Supervision

School of Educational Leadership, Strathfield Campus

Associate Professor Denis McLaughlin

Award for Outstanding Community Engagement

School of Education, Strathfield Campus

Dr Valda Dickinson RSM

Honorary Titles awarded

Honorary Fellow

Ms Jo Gaha – awarded for 3 years to 4 June 2005

Adjunct Professor

Professor David Steward – awarded for 3 years to 15 February 2005

Associate Professor Patricia Malone, RSJ – awarded for 3 years to 15 February 2005

Margaret Balint Award

In recognition of outstanding contributions by Sydney Campus staff members.

Colleen Máté, School of Arts and Sciences (NSW)

Staff Appointments and Promotions 2002

Lecturer (Level B)

Ms Donna Gronn

Lecturer (Level C)

Dr William Franzsen

Dr Carolyn Broadbent

Dr Paul Hansen

Dr Kerrie Hide

Dr Louise Thornwaite

Dr Gregory Moore

Dr Peta Goldberg RSM

Institution

Country

Albert-Ludwigs-Universität Freiberg	Germany
Catholic University of Daegu	R.O.Korea
Catholic University of Korea	Korea
Catholic University of Lyon	France
College of Notre Dame of Maryland	USA
ESPEME School of Business	France
Fachhochschule Darmstadt	Germany
Fachhochschule Frankfurt am Main	Germany
Fachhochschule Fulda	Germany
Fachhochschule Giessen-Friedberg	Germany
Fachhochschule Wiesbaden	Germany
Georgia College & State University	USA
Haagse Hogeschool	Netherlands
Hijiyama University	Japan
Hochschule für Gestaltung Offenbach am Main	Germany
Hochschule für Musik und Darstellende Kunst Frankfurt am Main	Germany
Johann Wolfgang Goethe-Universität Giessen	Germany
Justus Liebig-Universität Giessen	Germany
Kagoshima Immaculate Heart University	Japan
Katholische Universität Eichstätt-Ingolstadt	Denmark
Lund University, Department of Nursing	Sweden
Malmö University	Sweden
Nagoya University of Foreign Studies	Japan
Nazareth College of Rochester	USA
Nipissing University	Canada
Philipps-Universität Marburg	Germany
Regis University	USA
Santa Clara University	USA
Shoaguan University	P.R.China
Sophia University	Japan
St John's University	USA
St Martin's College, Lancaster	United Kingdom
St Norbert College	USA
St Thomas University, Fredericton	Canada
State University of NY, Oswego	USA
Technische Universität Darmstadt	Germany
Universidad Iberoamericana Plantel Golfo Centro	Mexico
Universität Kassel	Germany
Université Catholique De Lille	France
University of Constance	Germany
University of Gävle	Sweden
University of Heidelberg	Germany
University of Hohenheim	Germany
University of Karlsruhe	Germany
University of Mannheim	Germany
University of North Carolina at Greensborough	USA
University of St Thomas, Texas	USA
University of Struttgart	Germany
University of the Sacred Heart	Japan
University of Tübingen	Germany
University of Ulm	Germany
West Virginia University	USA

> Memoranda of Understanding and Agreements



**Notre Dame Institute of Education,
Karachi, Pakistan**

Master of Education, International
Graduate Certificate of Education

**Australian Institute of
Montessori Education**

Graduate Diploma in
Montessori Education

University of Southern Queensland

Cross-institutional enrolments

University of Queensland

Bachelor of Nursing (ACU National)
/ Bachelor of Applied Science
(Indigenous Primary Health Care) (UQ)
articulated program.

James Cook University

Cross-institutional enrolments

Marist Brothers (Vic)

Marcellin Champagnat
Postgraduate Project

**Institute of Education, University
of London**

Co-operation agreement

**Catholic Education Centre,
Wellington**

Master of Educational Leadership

**Catholic Institute of Theology,
Auckland**

Master of Religious Education

**Lutheran Church of Australia
and Luther Seminary**

Preparation of teachers for
Lutheran schools

(currently being revised)

**Bureau of Catholic Education in the
Diocese of Mauritius**

Master of Educational Leadership

**Corpus Christi Teachers College,
Suva, Fiji**

Co-operation agreement

(The Faculty of Education also has a
number of agreements with external
bodies regarding credit arrangements
and sponsorship of student cohorts.)

**Caritas Francis Hsu College,
Hong Kong**

Bachelor of Business (Accounting) program

**Department of Education, Youth and
Family Studies, ACT**

Master in Youth Studies

Brisbane Institute of TAFE

Co-operation agreement

St Vincent's and Mater Health, Sydney

Memorandum of Understanding

> Structure

Company Structure

Australian Catholic University is incorporated as Australian Catholic University Limited, a public company limited by guarantee. The Catholic Archbishops of the Archdioceses of Sydney, Melbourne, Brisbane, Canberra and Goulburn, the Bishops of the Dioceses of Ballarat and Paramatta congregational leaders of a number of religious institutions and nominees of the Archbishops and the Bishops of Ballarat are the Company members. The University senators are the company directors, some of whom are also members of the Company.

Four Chapters, based in Victoria, the Australian Capital Territory, New South Wales and Queensland, provide an interface between the University and the local community. Chapters act as an advisory body to the Senate. The local Archbishop appoints members of each Chapter. While the Chapters have no direct governance role in the University, the Chair of each Chapter annually advises the Annual General Meeting of the Company on the attainment in its State of the objects of the Company.

Management Structure

The chief executive officer of the University is the Vice-Chancellor. There are three Pro-Vice-Chancellors (located in Brisbane, Melbourne and Sydney) with delegated responsibility for assigned areas of university policy. There are Rectors at Ballarat and Canberra.

The Vice-Chancellor is also assisted by the Deans of the three faculties, the Executive Director University Services, Dean of Students, Academic Registrar and six Directors with national portfolios.

Each campus has a Students Representative Council, and there is a national student body, ACUNSA (Australian Catholic University National Students Association), located at a different campus each year.

Faculty of Arts and Sciences

The Dean is based at the Melbourne campus. Academic areas are:

- > School of Arts and Sciences (New South Wales)
- > School of Arts and Sciences (Queensland)
- > School of Arts and Sciences (Victoria)
- > School of Psychology (Victoria)
- > School of Social Work (Australian Capital Territory)

Sub-Faculty of Business and Informatics

The Head of the Sub-Faculty is based at the North Sydney Campus.

Sub-faculty schools are:

- > School of Business and Informatics (New South Wales)
- > School of Business and Informatics (Queensland)
- > John and Barbara Ralph School of Business and Informatics (Victoria)

Sub-Faculty of Philosophy and Theology

The Professor of Theology and Head of the Sub-Faculty, is based at the Brisbane Campus. The Professor of Philosophy is based at the Melbourne campus.

Sub-faculty schools are:

- > School of Philosophy
- > School of Theology (Australian Capital Territory)
- > School of Theology (New South Wales)
- > School of Theology (Queensland)
- > School of Theology (Victoria)

Faculty of Education

The Dean is based at the Melbourne Campus. The faculty schools are:

- > School of Education (Australian Capital Territory)
- > School of Education (New South Wales)
- > School of Education (Queensland)
- > School of Education (Victoria)
- > School of Educational Leadership
- > School of Religious Education

Faculty of Health Sciences

The Dean is based at the North Sydney Campus. The faculty schools are:

- > School of Exercise Science (New South Wales)
- > School of Exercise Science (Victoria)
- > School of Nursing (New South Wales)
- > School of Nursing (Queensland)
- > School of Nursing (Victoria)

International education

The International office at ACU National works closely with the Faculties. It assists international students with study at the postgraduate, undergraduate and non-award level.

Indigenous education

ACU National has three Indigenous support units, Weemala in Brisbane, Yalbalinga in Sydney and Jim-baa-yer in Melbourne and Ballarat. The Indigenous units provide social, cultural, personal and academic support to Indigenous students studying at the University. The Indigenous units work closely with the Faculties in assisting Indigenous students with study at the postgraduate, undergraduate and non-award level.

Mixed modes of course delivery

Online

Postgraduate programs in Education, Management, Nursing, Religious Education and Theology are available fully online through ACUweb.

An online learning platform for undergraduate programs, ACU National Online, using WebCT, allows academic staff to supplement their face-to-face teaching by making materials available online for students to access.

Other

A number of courses are offered through a mixed mode of delivery, either on-campus or off-campus at locations throughout Australia. Modes utilized include distance, online, intensive and winter/summer schools.

Community Outreach

Centre for Communications Studies (ACUcom) students are able to:

- > Learn English from specialist staff who combine the latest communicative methods with traditional teaching of English grammar
- > Study at elementary, intermediate and advanced levels in small classes of 15 students or less
- > Graduate with a Certificate of Attainment issued by the University
- > Use the University facilities, such as the libraries, computer rooms, gyms and canteens
- > Mix with Australian students
- > Gain advice about further study options in Australia.

ACU National has priority research areas, defined by its Flagships and major Centres. These represent areas where researchers make original contributions to their discipline and to the community in which they live and work.

Flagships strengthen ACU National's profile for research and collaboration with industry partners within key areas that fit with the educational ethos, philosophy and Mission of the University. Flagships play an important promotional and developmental role beyond that of the Centre from which they may have developed.

Institute for the Advancement of Research

The Institute of the Advancement of Research promotes research activities, members include ACU National researchers and visiting scholars from Australian and overseas institutions.

The goals of the Institute are directly related to the research goals of the University. In order of priority they are:

- > conducting quality research
- > supporting and encouraging academic staff, especially new researchers, in their research efforts and goals
- > attracting research funding (e.g. ARC Discovery and Linkage Grants) which will contribute to an increase in the research funding support from the Commonwealth Government to the University;
- > helping to attract funded postdoctoral fellows (e.g. ARC Postdoctoral Fellowships) to the University
- > helping to attract high-quality, higher-degree candidates to work with research professors and participating, wherever possible, in postgraduate supervision and activities
- > promoting the research achievements of the University.

Flagships

Early Christian Studies

The Centre began in 1997, and in 2000 it became one of the University's Flagship areas. The seventeen members belong to three discipline-based networks of the Sub-Faculty of Theology and the Institute for the Advancement of Research. The collaborative approach to research and postgraduate supervision is seen by its members as an effective combination of personnel, resources and aspirations because of the group's focus on the New Testament writings and the reception and transmission of these writings in the works of the great Christian thinkers, preachers, historians and catechists in the late antique world.

Cardinal Clancy Centre and Flagship for Research in the Spiritual, Moral, Religious and Pastoral Dimensions of Education

Based at the ACU National Strathfield campus, this project provides support for research and development in moral and religious education. Equipped through a number of Australian Research Council grants, the MREP has facilities for data analysis, communications, desktop publishing and authoring in computer-based multimedia and the Internet. It has set up a national database on Australian research related to moral and religious education, and has produced a number of CD-Roms for religious education.

Catholic Educational Leadership

The following areas are being pursued by the Catholic Educational Leadership: SOLR Project and the Millennial Principals Project for the Board of Lutheran Education, Leadership Succession Research Project, conducted international conference on Catholic Educational Leadership, leadership renewal programs and leadership succession project. Research project: Socially responsible indicators for Benchmarking Policy and practice in Service Organisations.

Lifelong Learning

The Centre was established to provide a basis for research and scholarship, teaching and learning, policy and advice, and community service and outreach in the area of lifelong learning. It further enhances the university's capacity to promote reflection upon personal and spiritual values in the context of local, national and international communities.

Mathematics, Teaching and Learning Centre (Flagship status in March 2003)

The centre's aims are:

- > to stimulate, support and conduct research into the teaching and learning of mathematics
- > to conduct professional development programs for educators, teachers and the education community generally
- > to provide consultancy services to education systems, regions and individual schools
- > to supervise the research of graduate students.

It has two main research themes: The Contemporary Mathematics Classroom and Facilitating the Professional Growth of Mathematics Teachers. The centre was established in 1989 at the Australian Catholic University (then the Institute of Catholic Education), and is based at Melbourne campus.

Youth Studies

The Youth Studies Flagship endeavours to promote ACU National's growing strength in Youth Studies as one of the University's priority areas. It is in partnership with the Social Policy and Advocacy Research Centre (SPARC), which forms the research arm of the relationship. The Flagship incorporates research interests as well as engaging with the community and non-Government organisation sectors in the youth studies arena. It has an active involvement in the youth sector and Government departments that oversee youth policy and practices. The Flagship also has a special interest in the ethical principles that drive youth work practice and research. It plays a mentoring role to staff, by for example running research or practice-based training programs. It is also intricately linked to the undergraduate Bachelor of Social Science (Youth Studies) program at the Melbourne campus and to a lesser degree in the Youth Studies post-graduate program at the Canberra campus.

Spiritual, Moral and Religious Education

The Flagship promotes research and academic development in the service of learning/teaching in spiritual, moral and religious education. These areas have long been central to the Mission of ACU National. Professor Graham Rossiter is the Flagship Director.

Centres

A Research Centre is often at the core of a Flagship, and is an ideal way for researchers to work in an interdisciplinary environment, and with more experienced colleagues on topics of mutual interest.

The Plunkett Centre for Ethics in Health Care

The mission of the centre is to examine the ethical aspects of contemporary practices in health care and biomedical research. It conducts research, engages in teaching, provides an ethics consultancy service for health-care practitioners and contributes a Catholic perspective to public discussion of these issues.

The centre was formally established in 1992 on the signing of a Memorandum of Agreement between St Vincent's Hospital, Sydney, and Australian Catholic University. It is named after John Hubert Plunkett (1802–1869), the first Catholic Solicitor-General and Attorney-General of the colony of New South Wales, and a great friend and benefactor of the first Sisters of Charity in Australia. The centre is located on the Darlinghurst campus of what is now known as The Campus of St Vincent's and Mater Health, Sydney.

The Social Policy and Advocacy Research Centre (SPARC)

SPARC is primarily involved in social research and advocacy. Its core business involves research and advocacy on issues of social policy and social justice. Dr Judith Bessant is the foundation Director of SPARC. It is directed towards playing a leading and monitoring role in social, economic and public policy developments that focus on the concerns of the disadvantaged and the vulnerable in our society while contributing to discussion and debate in the public sphere. SPARC is also directed towards extending the range of practicable policy alternatives as they apply to vulnerable and marginalized sectors of our community.

Centre for Research in Ethical Decision-making in Organisations

CREDO offers services in research, consultancy, education, training and development and teaching to strengthen organizations in their ethical decision making. CREDO is directed by John Little. The University's Professor of Accounting, Jack Flanagan is active in CREDO in areas of governance and accountability

Golding Centre for Women's History, Theology and Spirituality

The ACU National Project for Research in Women's History, Theology and Spirituality was upgraded to centre status in July 2003. The Centre is directed by Dr Sophie McGrath and team members are Dr Rosa MacGinley and Dr Kim Power.

The Faculty of Arts and Sciences has two Faculty Research Centres:

Centre for Environmental Sustainability and Stewardship

Centre for Religion and the Arts

The Faculty of Education has one Faculty Research Centre:

Centre for Educational Leadership

The Faculty of Health Sciences has one Faculty Research Centre:

Centre of Physical Activity Across the Lifespan

> Research 2002

Researcher	Faculty	Campus	Project title	\$ Income	Grantor
ARC Large Grants					
Allen, Pauline	Arts & Sciences	Brisbane	The development of the cult of Mary in North African Christianity (100-431 C.E.)	38,234	Australian Research Council Large Grant
Clarkson, Philip	Education	Melbourne	What values do students learn from mathematics and mathematics teaching? How are these values learnt?	37,895	Australian Research Council Large Grant
Edwards, Louise	Arts & Sciences	Brisbane	Citizen, governance and gender: Chinese women in political action	38,320	Australian Research Council Large Grant
Mayer, Wendy	Arts & Sciences	Brisbane	Completing the picture of a historical source: The homilies of John Chrysostom	37,582	Australian Research Council Large Grant
Swain, Shurlee	Arts & Sciences	Melbourne	Re-Inventing Motherhood: women, breadwinning and child care in Australia, 1880-1980	5,000	Australian Research Council Large Grant
ARC Fellowships					
Mayer, Wendy	Arts & Sciences	Brisbane	Completing the picture of a historical source: The homilies of John Chrysostom	104,348	Australian Research Council Fellowship
Neil, Bronwen	Arts & Sciences	Brisbane	Popes and Martyrs: The politics of hagiography in Ninth-Century Rome	68,523	Australian Research Council Fellowship
ARC SPIRT Scheme					
Duignan, Patrick	Education	Sydney	Socially responsible indicators of policy, practice and benchmarking in service organisations	73,575	Australian Research Council, SPIRT Scheme
Research Infrastructure Block Grants					
Allen, Pauline	Arts & Sciences	Brisbane	Early Christian studies	12,511	Department of Employment, Education and Training, Research Infrastructure Block Grant (RIBG) Funding
Chapman, Judith	Education	Melbourne	Lifelong Learning	12,511	Department of Employment, Education and Training, Research Infrastructure Block Grant (RIBG) Funding
Clarke, Douglas	Education	Melbourne	Mathematics Reaching and Learning	12,511	Department of Employment, Education and Training, Research Infrastructure Block Grant (RIBG) Funding
Duignan, Patrick	Education	Sydney	Educational Leadership	12,511	Department of Employment, Education and Training, Research Infrastructure Block Grant (RIBG) Funding
Rossiter, Graham	Education	Sydney	Religious and Values Education	12,511	Department of Employment, Education and Training, Research Infrastructure Block Grant (RIBG) Funding
Webber, Ruth	Arts & Sciences	Melbourne	Youth Studies	12,511	Department of Employment, Education and Training, Research Infrastructure Block Grant (RIBG) Funding

Researcher	Faculty	Campus	Project title	\$ Income	Grantor
Commonwealth Consultancies					
Bessant, Judith	Art & Sciences	Melbourne	Heroin users, housing and social participation project	3,636	Australian Housing and Urban Research Institute (AHURI)
Chapman, Judith	Education	Melbourne	Lifelong Learning, Teachers and Teacher Educators	39,257	Commonwealth DEST
Davies, Elizabeth	Health Sciences	Brisbane	Improving and maintaining faecal continence in people with dementia being cared for at home	79,000	Commonwealth Dept. Health & Aged
Miller, Maria	Health Sciences	Melbourne	Getting Em N Keepin Em - Increasing Indigenous Students in Schools of Nursing	86,362	Commonwealth Dept. Health & Aged
State Consultancies					
Boyd, Cecelia	Health Sciences	Brisbane	Nursing care needs of patients waiting for transplants: symptom management, psychosocial support and quality of life	3000	St Vincent's Hospital, Sydney
Boyd, Cecelia	Health Sciences	Brisbane	Nursing care needs of patients waiting for transplants: symptom management, psychosocial support and quality of life	1000	Transplant Association
Boyd, Cecelia	Health Sciences	Brisbane	Nursing care needs of patients waiting for transplants: symptom management, psychosocial support and quality of life	3000	Mater Private Hospital
Chapman, Judith	Education	Melbourne	Lifelong learning, adult community education in rural Victoria: reaching the unreached learner	240,000	Victorian Department of Education, Employment and Training
Chesterton, Paul	Education	Sydney	Evaluation of the Partnership Encouraging Effective Learning (APEEL)	8851	NSW Department of Education and Training
Chesterton, Paul	Education	Sydney	Evaluation of the Languages Continuity Initiative (LCI)	13647	NSW Department of Education and Training
Chesterton, Paul	Education	Sydney	Evaluation of the Consistent Teacher Judgement On-Line Program	5000	NSW Department of Education and Training
Clarke, Douglas	Education	Melbourne	Early Numeracy Research Project	40000	Victorian Department of Education, Employment and Training
Clarke, Douglas	Education	Melbourne	Early Numeracy Research Project	250	Lutheran Schools Ass
Clarke, Douglas	Education	Melbourne	Research Numeracy Teaching Approaches in Primary Schools	22498	Victorian Department of Education, Employment and Training
Warren, Elizabeth	Education	Brisbane	Effective learning and teaching practices in number operations and measurement for Indigenous school students in the Mount Isa Region	22,000	Sunset State School, Queensland
Wilson, Scott	Arts & Sciences	Sydney	An assessment of chemical repellants in the management of vehicle-marsupial collisions in rural NSW	8182	Road Traffic Authority, NSW
Woolford, Jim	Education	Sydney	Evaluation of the Aboriginal Community Patrols Program	25000	NSW Attorney General's Department
Contract Research					
Bicknell, Brian	Arts & Sciences	Sydney	Bioremediation at Elison Park, Silverwater NSW	2,000	Hanitro Pty Ltd
Butcher, Jude	Education	Sydney	Planning, Implementation and Review of Advanced Teaching Skills Program	14,000	Thomas Hasall Anglican College
Cameron-Traub, Elizabeth	Health Sciences	Sydney	Consumer expectations: post ICU patient care needs and nursing cultures in health services	5,000	St Vincent and Mercy Private Hospital, Melbourne

> Research 2002

Researcher	Faculty	Campus	Project title	\$ Income	Grantor
Contract Research					
Chesterton, Paul	Education	Sydney	Evaluation of the Catholic Intensive English Centre	19,550	Catholic Education Office, Diocese of Parramatta
Clarke, Douglas	Education	Melbourne	Success in numeracy education strategy	104,322	Catholic Education Office, Melbourne
Clarkson, Phillip	Education	Melbourne	Baseline Survey Design Phase: Primary and Secondary Teacher Education Project, PNG	39,676	Australian Agency for International Development
d'Arbon, Anthony	Education	Sydney	Leadership Succession	37,200	Catholic Education Commission
Davis, Cathy	Arts & Sciences	Canberra	Wesley Lifeforce Evaluation	34,597	Wesley Mission
Davis, Cathy	Arts & Sciences	Canberra	Life Force Evaluation	23,213	Wesley Mission
Duignan, Patrick	Education	Sydney	Socially responsible indicators of policy, practice and benchmarking in service organisations	6,000	Catholic Education Office, Diocese of Wollongong
Duignan, Patrick	Education	Sydney	Socially responsible indicators of policy, practice and benchmarking in service organisations	10,000	Centacare Sydney
Duignan, Patrick	Education	Sydney	Socially responsible indicators of policy, practice and benchmarking in service organisations	6,000	Catholic Education Office, Diocese of Parramatta
Duignan, Patrick	Education	Sydney	Millennial Principals Project	22,250	Board of Lutheran Schools
Fischer, Imke	Health Sciences	Sydney	A Study of the Health and Well Being of Hotel Room Attendants	4,589	The Regent Sydney
Joyce, Marie	Arts & Sciences	Melbourne	Psycho-educational approaches to prevention and intervention for marginalised young people in the Barwon Region of Victoria	2,500	Catholic Education Office Melbourne
Joyce, Marie	Arts & Sciences	Melbourne	Psycho-educational approaches to prevention and intervention for marginalised young people in the Barwon Region of Victoria	2,500	MacKillop Family Services
Joyce, Marie	Arts & Sciences	Melbourne	VisyCares Link Centre	94,604	The Pratt Foundation
Kemp, Justin	Health Sciences	Melbourne	Physical activity, aerobic fitness and fatness in children	5,000	Murdoch Children's Research Institute
Kennedy, Joy and O'Neill, Heather	Education	Brisbane	Analysis of Indigenous school students' aspirations with regard to their schooling and further study of Indigenous parents with regard to their children's further education and advice provided by career counsellors	6,000	Univ. Western Sydney
Lewis, Ed	Education	Sydney	Male Primary Teachers: enhancing the options	10,626	Catholic Education Office, Diocese of Sydney
McGilp, Jackie	Education	Melbourne	Lifelong Learning, Schools and Learning Communities in Regional and Rural Victoria	5,000	Catholic Education Office, Diocese of Sale
Mason, Michael	Institute for the Advancement of Research	Melbourne	Catholic Church Life Survey Project	2,000	Redemptorists

Researcher	Faculty	Campus	Project title	\$ Income	Grantor
Contract Research					
Mason, Michael	Institute for the Advancement of Research	Melbourne	Catholic Church Life Survey Project	500	Augustinians - Spiri
Mason, Michael	Institute for the Advancement of Research	Melbourne	Catholic Church Life Survey Project	5,000	Pious Soc.St Charles
Naughton, Geraldine	Health Sciences	Sydney	Critical Windows: Health related behaviour in children after school	5,000	NSW Health
Saintilan, Neil	Arts & Sciences	Sydney	Design of a biological monitoring program for Berowa Creek Estuary	4,480	Hornsby Shire Council
Saintilan, Neil	Arts & Sciences	Sydney	The contribution of saltmarshes to temperate estuarine fisheries	5,000	Land & Water Conserv (Mazumder Industry Contribution)
Seibold, Carmel	Health Sciences	Melbourne	An exploration of the degree to which chemically dependent pregnant women's needs are met through provision of specialised clinics	5,000	Mercy Hospital, Melbourne
Swain, Shurlee	Arts & Sciences	Melbourne	History of Bishop Crane, Sandhurst Victoria 1878-1901	17,200	Catholic Diocese of Sandhurst, Victoria
Swain, Shurlee	Arts & Sciences	Melbourne	Melbourne Online: A multimedia interpretation of city history and culture	5,000	University of Melbourne
Thornthwaite, Louise	Arts & Sciences	Sydney	ILO Project: Work and Family Issues	6,000	University of Sydney
Tobin, Bernadette	Arts & Sciences	Sydney	Surgical Practice in a changing health system: resolving the ethical questions	5,000	Royal A/Asian College
Tobin, Bernadette	Arts & Sciences	Sydney	Professionalism vs Caring towards a coherent ethic of nursing for Australia	5,000	Sisters of Charity Health
Warren, Elizabeth	Education	Brisbane	Strategic Numeracy Research and Development Project QLD 2001 " What elements of learning environments promote enhanced student numeracy outcomes? "	34,569	Education Queensland
Webber, Ruth	Arts & Sciences	Melbourne	The impact of illicit drug users on family members and non-siblings	5,000	Mary of the Cross Centre
Webber, Ruth	Arts & Sciences	Melbourne	Community Services and Drug Dependent Client Groups: Are they meeting the needs?	1,670	Catholic Social Services, Melbourne
Webber, Ruth	Arts & Sciences	Melbourne	Community Services and Drug Dependent Client Groups: Are they meeting the needs?	1,665	Council for Homeless People
Webber, Ruth	Arts & Sciences	Melbourne	Community Services and Drug Dependent Client Groups: Are they meeting the needs?	1,665	Children's Welfare Association
Donations					
Cameron-Traub, Elizabeth	Health Sciences	Sydney	Nursing Fellowship	213,000	Sisters of Charity Health
Mason, Michael	Institute for the Advancement of Research	Melbourne	Catholic Church Life Survey	20,000	Australian Catholic Bishops' Conference
Tobin, Bernadette	Arts & Sciences	Sydney	Ethics in Health Care	20,000	Sacred Heart Hospital
Tobin, Bernadette	Arts & Sciences	Sydney	Ethics in Health Care	60,000	St Vincent's Public Hospital, Sydney
Tobin, Bernadette	Arts & Sciences	Sydney	Ethics in Health Care	20,000	St Vincent's Private Hospital, Sydney
Tobin, Bernadette	Arts & Sciences	Sydney	Ethics in Health Care	1,400	Catholic Health Melbourne
Tobin, Bernadette	Arts & Sciences	Sydney	Ethics in Health Care	12,500	Catholic Health Care
Tobin, Bernadette	Arts & Sciences	Sydney	Ethics in Health Care	1,953	Montefiore Medical Centre

Research

Research income (2002):	\$2,312,811
Increase in research income (1997-2002)	547%
Higher research degree candidates	317
Higher research degree completions	13

Research income sources:

Commonwealth Government	\$703,948 (30%)
Other Public sector	\$572,541 (25%)
Private industry and other	\$1,036,322 (45%)

Research outputs (2002):

Books, authored research	6.5
Book chapters	10.5
Articles in scholarly refereed journals	70.44
Full written conference paper – Refereed proceedings	35.69
Total	123.13

Staff

Total number of staff	787 Full-time equivalents (FTE) excluding casuals
General staff	419 (FTE) excluding casuals
Academic staff	368 (FTE) excluding casuals

Quality of staff

Percentage of academic staff with higher degree awards	92.9%
National average percentage of academic staff with higher degree awards	73.2%
(Source: DEST)	
ACU National student to teacher ratio	18.9:1
Australian average, all universities	20.4:1
(Source:AVCC)	

Students

Total University enrolments	11,604
Undergraduate enrolments	8,240 (71%)
Postgraduate enrolments	3,006 (26%)
Non-award enrolments	358 (3%)

2002 Enrolment by State	ACT		NSW		QLD		VIC		ACU National	
	Total	%	Total	%	Total	%	Total	%	Total	%
Office of Research	11	(1.8)	78	(1.7)	91	(3.3)	137	(3.6)	317	(2.7)
Faculty of Arts and Sciences	151	(25.0)	1327	(29.6)	964	(35.0)	1051	(28.0)	3493	(30.1)
Faculty of Education	417	(69.0)	2082	(46.3)	988	(35.9)	1684	(44.8)	5171	(44.6)
Faculty of Health Sciences			756	(16.8)	531	(19.3)	824	(21.9)	2111	(18.2)
Combined Schools	25	(4.1)	246	(5.5)	180	(6.5)	61	(1.6)	512	(4.4)
Total	604		4489		2754		3757		11604	

2002 Enrolments by level and state	ACT		NSW		QLD		VIC		Total	
Higher-Degree Research	11	(1.8)	78	(1.7)	91	(3.3)	137	(3.6)	317	(2.7)
Higher-Degree Coursework	98	(16.2)	653	(14.5)	376	(13.7)	398	(10.6)	1525	(13.1)
Other Postgraduate	66	(10.9)	281	(6.3)	328	(11.9)	489	(13.0)	1164	(10.0)
Bachelor	407	(67.4)	3145	(70.0)	1767	(64.2)	2689	(71.6)	8008	(69.0)
Other undergraduate			95	(2.1)	137	(5.0)			232	(2.0)
Non-Award	22	(3.6)	237	(5.3)	55	(1.9)	44	(1.2)	358	(3.1)
Total	604		4489		2754		3757		11604	

Enrolment by Age Group	2002	%	Enrolment by Level & Gender	2002-F total	%	2002-M total	%
19 and below	3135	(27.0)	Higher-Degree Research	164	(1.4)	153	(1.3)
20 to 24	3783	(32.6)	Higher Degree Coursework	905	(7.8)	620	(5.3)
25 to 29	1256	(10.8)	Other Postgraduate	849	(7.3)	314	(2.7)
30 to 39	1493	(12.9)	Bachelor	5735	(49.4)	2274	(19.6)
40 to 49	1336	(11.5)	Other Undergraduate	173	(1.5)	59	(1.5)
50 to 59	521	(4.5)	Non-Award	225	(1.9)	133	(1.1)
60 and above	80	(0.7)					
Total	11604			8051	(69.4)	3553	(30.6)

	Total	% of total UG/PG
Students enrolled in Fee-paying UG courses	238	(2.8)
Students enrolled in Fee-paying PG courses	1184	(39.4)

Internationalisation

Total International student enrolments	795 (695 onshore 100 offshore)	
International undergraduate enrolments	461 (461 onshore 0 offshore)	(58%)
International postgraduate enrolments	334 (234 onshore 100 offshore)	(42%)

Main source of overseas students:

India (155), Indonesia (86), South Korea (71), China (35), Japan (34), USA (35)

Main source of overseas students nationally, as defined by the AVCC:

Singapore (18,227), Malaysia (16,344), Hong Kong (15,719), Indonesia (9,619), China (8,018), India (5,485), USA (3,548)

Main source of onshore overseas students by region:

Asia/Middle East	517
Europe	57
Africa	31
Americas	60
Caribbean Islands	1
Pacific Islands	12
Other	17
Total	695

ACU National offshore teaching:

Notre Dame Institute of Education, Karachi, Pakistan

Francis Hsu College, Hong Kong

Catholic Institute of Theology, Auckland, New Zealand

Indigenous

Total Indigenous student enrolments	269
ACU National Indigenous student retention rate	85%
National average Indigenous student retention rate	60.4%
(Source: DEST)	

> ACU National Foundation

with gratitude

ACU National's Foundation was established by the Senate to foster and encourage the continuing interest and financial support of persons concerned to advance and promote the mission of the University.

ACU National is deeply grateful for the generous support of the institutions and individuals listed below, who contributed to the Foundation in 2002 and up to the date of publication of this report (September 2003).

There are also a number of private donors who do not wish to be acknowledged. The University is equally grateful for their support.

Ballarat Campus (Aquinas)

Diocese of Sandhurst
St John of God Health Care

Brisbane Campus (McAuley at Banyo)

Congregation of Christian Brothers
De La Salle Brothers
Queensland Catholic Education Commission
The Australian Association of the Sovereign Military Order of Malta
The Pratt Foundation
Watpac Limited

Canberra Campus (Signadou)

Canberra Southern Cross Club
Catholic Education Office, Archdiocese of Canberra & Goulburn
Society of St Vincent de Paul, Archdiocesan Council of Canberra & Goulburn

Melbourne Campus (St Patrick's)

Catholic Church Insurances
Catholic Archdiocese of Melbourne
National Institute of Youth Performing Arts Australia Pty Ltd.
Parishioners of Melbourne
The Pratt Foundation
Ralph Family
Roman Catholic Trusts' Corporation for the Diocese of Melbourne
Saint Francis Xavier Cabrini Hospital

North Sydney and Strathfield Campuses (MacKillop and Mount St Mary)

Catholic Education Office, Sydney
Catholic Education Office, Parramatta Diocese
Catholic Schools Office, Broken Bay Diocese
CPA Australia
Dooleys Lidcombe Catholic Club
Frater Family (NSW and ACT Campuses)
Parents Representative Council of Catholic Schools
St Joseph's Parish Catholic Church, Neutral Bay
Siloam Korean Presbyterian Church, Strathfield
Sisters of Charity Health Service (NSW)
Sisters of the Good Samaritan, Glebe
The Children's Hospital at Westmead in support of the Chair of Exercise Science
Tony Carroll, Carroll O'Dea Solicitors

www.acu.edu.au

